



Board of Trustees Work Session

Hawthorne Elementary School
430 Madison Avenue – Helena MT. 59601

Tuesday, March 19, 2019 – Tour at 3:30 p.m. / Meeting at 4:00 p.m.

AGENDA

- I. TOUR OF SCHOOL
- II. CALL TO ORDER / PLEDGE OF ALLEGIANCE
- III. REVIEW OF AGENDA
- IV. PRESENTATION
 - A. Hawthorne Elementary School Presentation (See Attached)
- V. **GENERAL PUBLIC COMMENT:** *This is the time for comment on public matters that are not on the agenda. Public matters do not include any pending legal matters, private personnel issues or private student issues. Please do not attempt to address such issues at this time or you will be ruled out of order. The Board cannot enter into a discussion during General Public Comment.*
- VI. NEW BUSINESS
 - A. Items for Action
 - 1. 2-26-19 Board Work Session Minutes (See Attached)
 - 2. 3-6-19 Special Board Meeting Minutes (See Attached)
- VII. SUPERINTENDENT'S REPORT
- VIII. BOARD COMMENTS
- IX. ADJOURNMENT
 - Next Regular Board Meeting: Tuesday, April 9, 2019
 - Next Work Session: Tuesday, April 23, 2019 at Bryant Elementary School

Helena Public Schools Board of Trustees

Sarah Sullivan
Board Chair

Terry Beaver
Vice Chair

Tyler Emmert
Trustee

Luke Muszkiewicz
Trustee

Jeff Hindoen
Trustee

Libby Goldes
Trustee

Sanjay Talwani
Trustee

Jennifer Walsh
Trustee

Hawthorne Elementary School

Board of Trustees Report
March 19, 2019



Opening of Each Day

Pledge of Allegiance

Hawthorne School Pledge

I pledge to live this day with
Hope in my heart,
Energy in my mind
And gentleness in my Spirit.

Strong Minds – Gentle Hearts



Hawthorne School Mission Statement and Vision

Hawthorne Mission

In concert with families and the community, Hawthorne Elementary School provides a safe, enriched environment that nurtures and inspires respectful, informed, and compassionate life-long learners.

Hawthorne Vision Statement

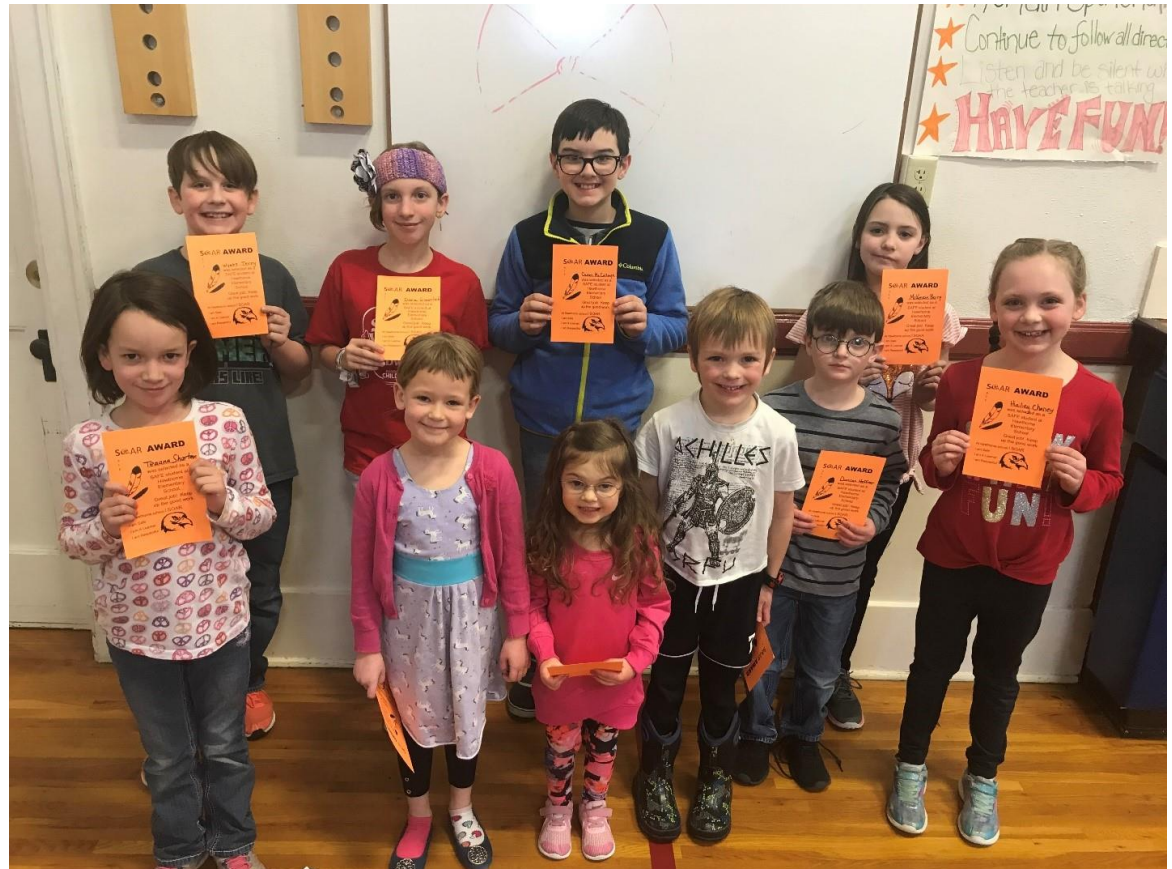
Strong Minds – Gentle Hearts

Soar Assemblies

I am Safe;

I am
Respectful;

I am a
Learner!



Student Council



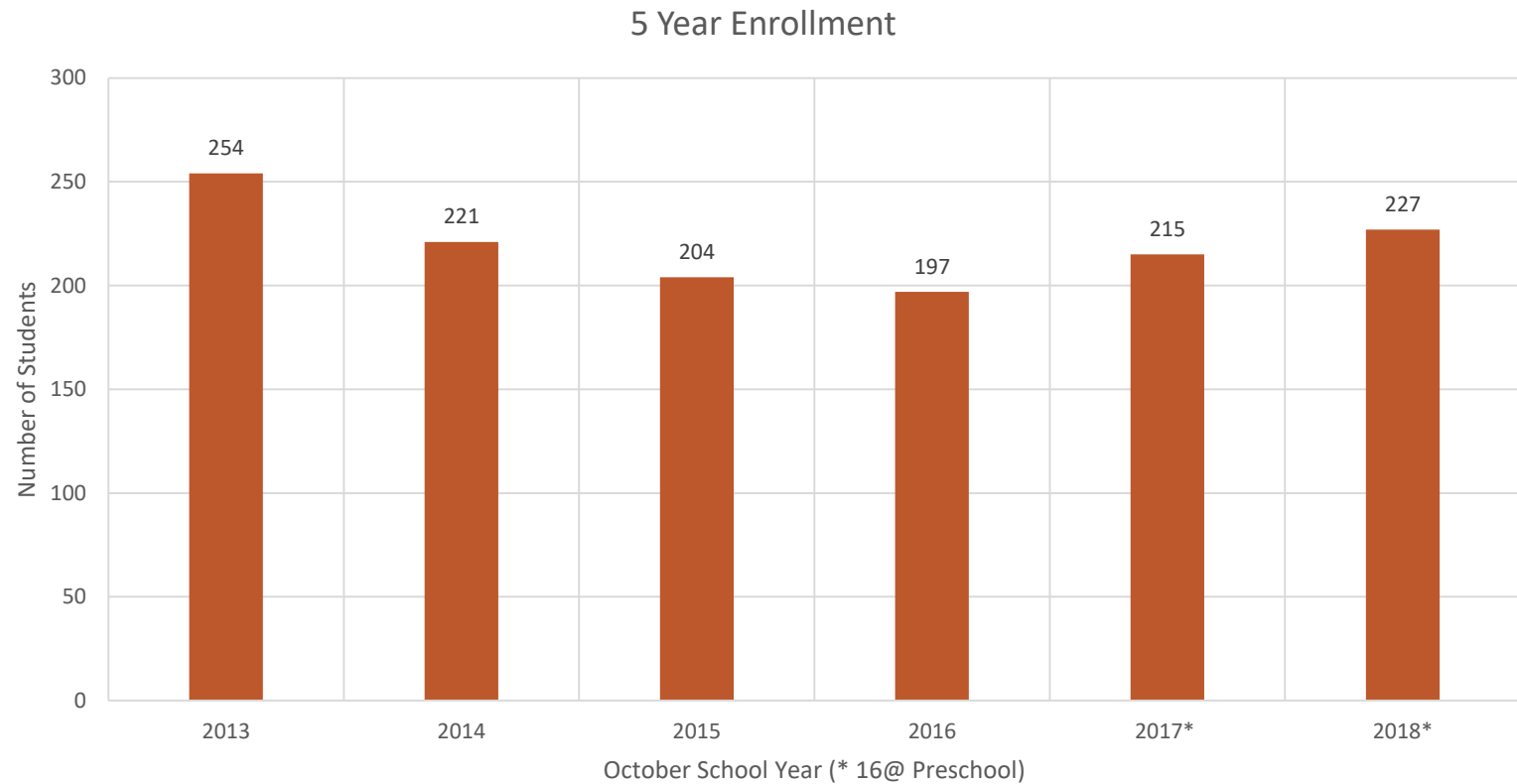
Niceness is Priceless



Volunteers

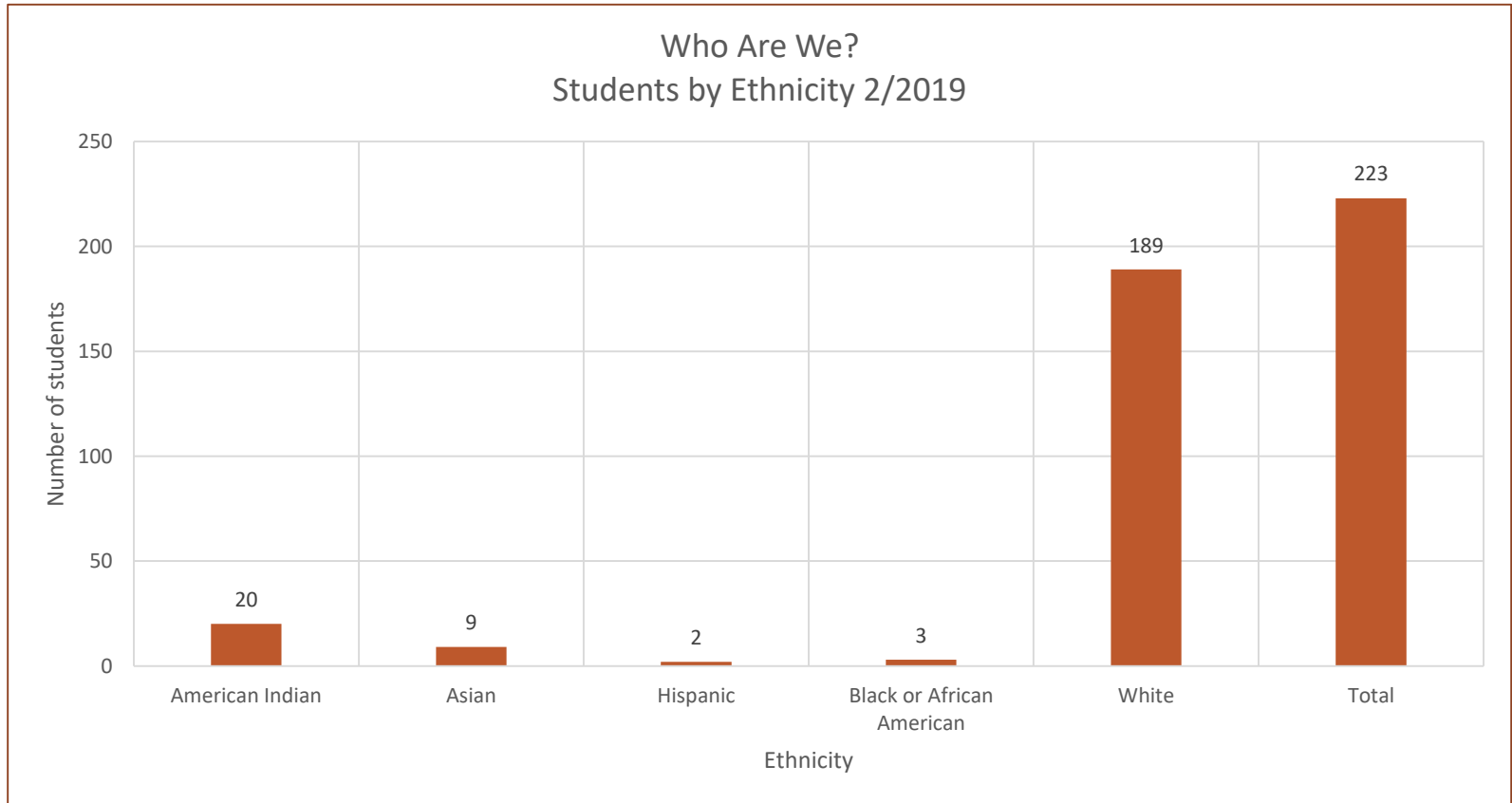


5 Year Enrollment October Count



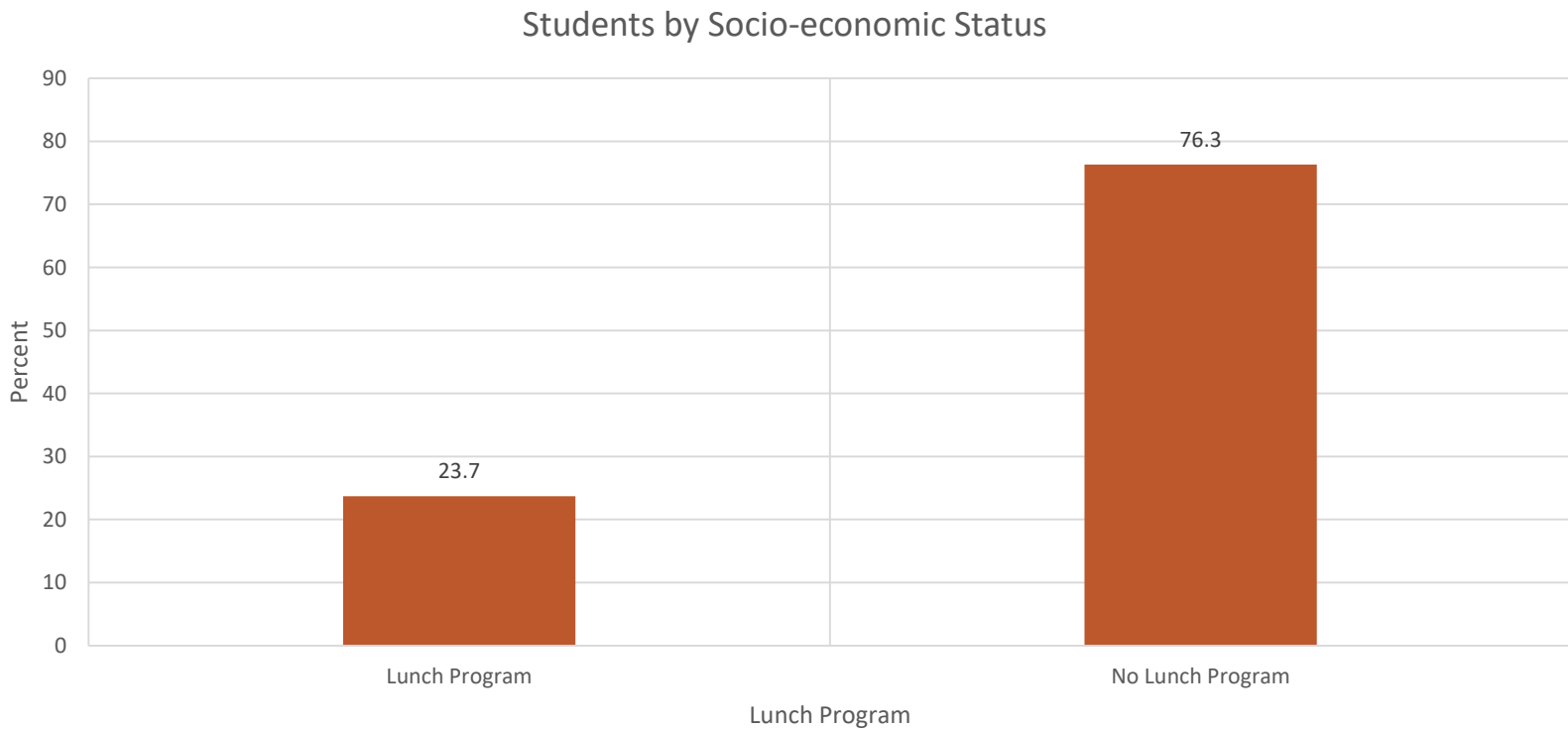
Who Are We?

Students by Ethnicity



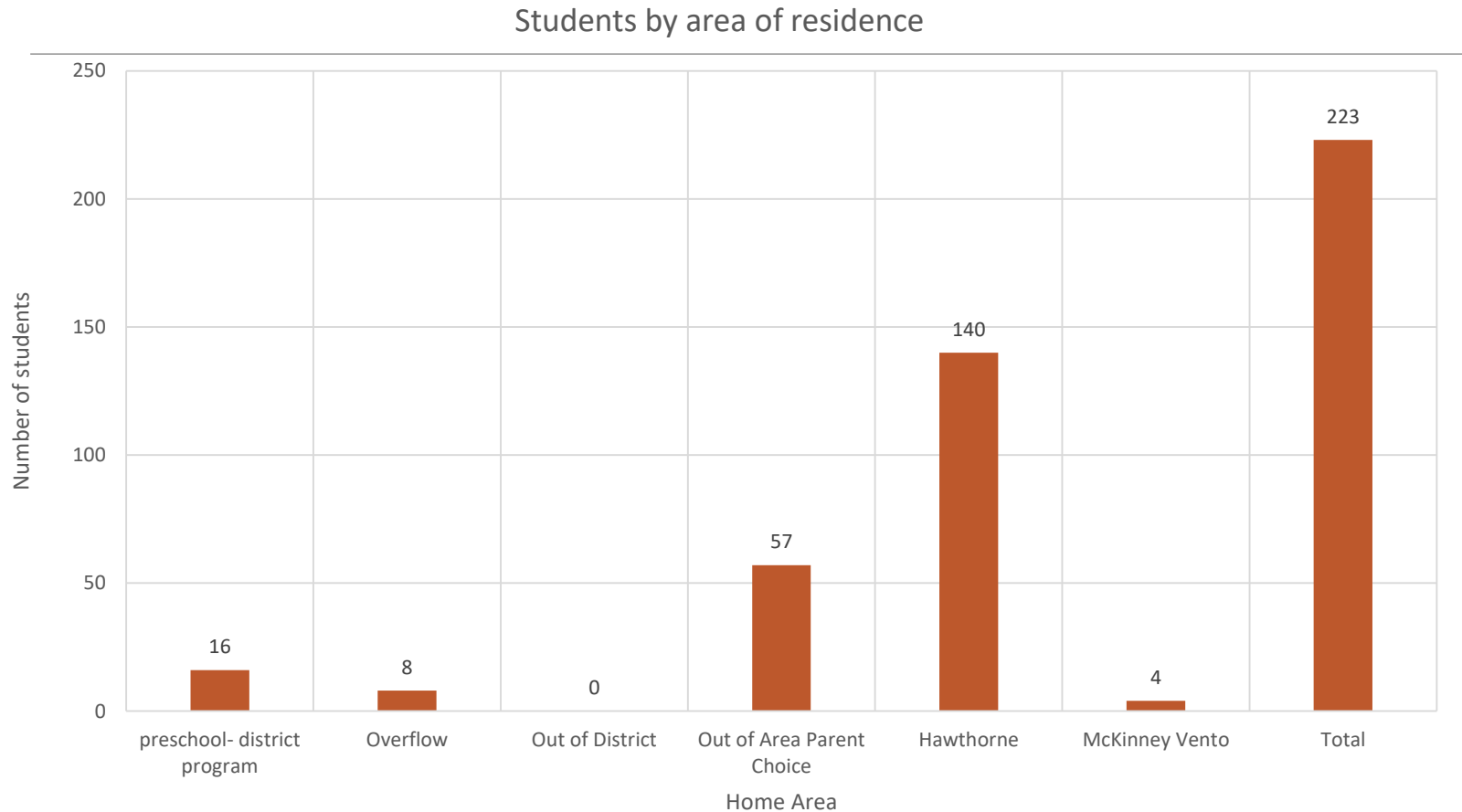
Who are we?

Students by Socio-economic status



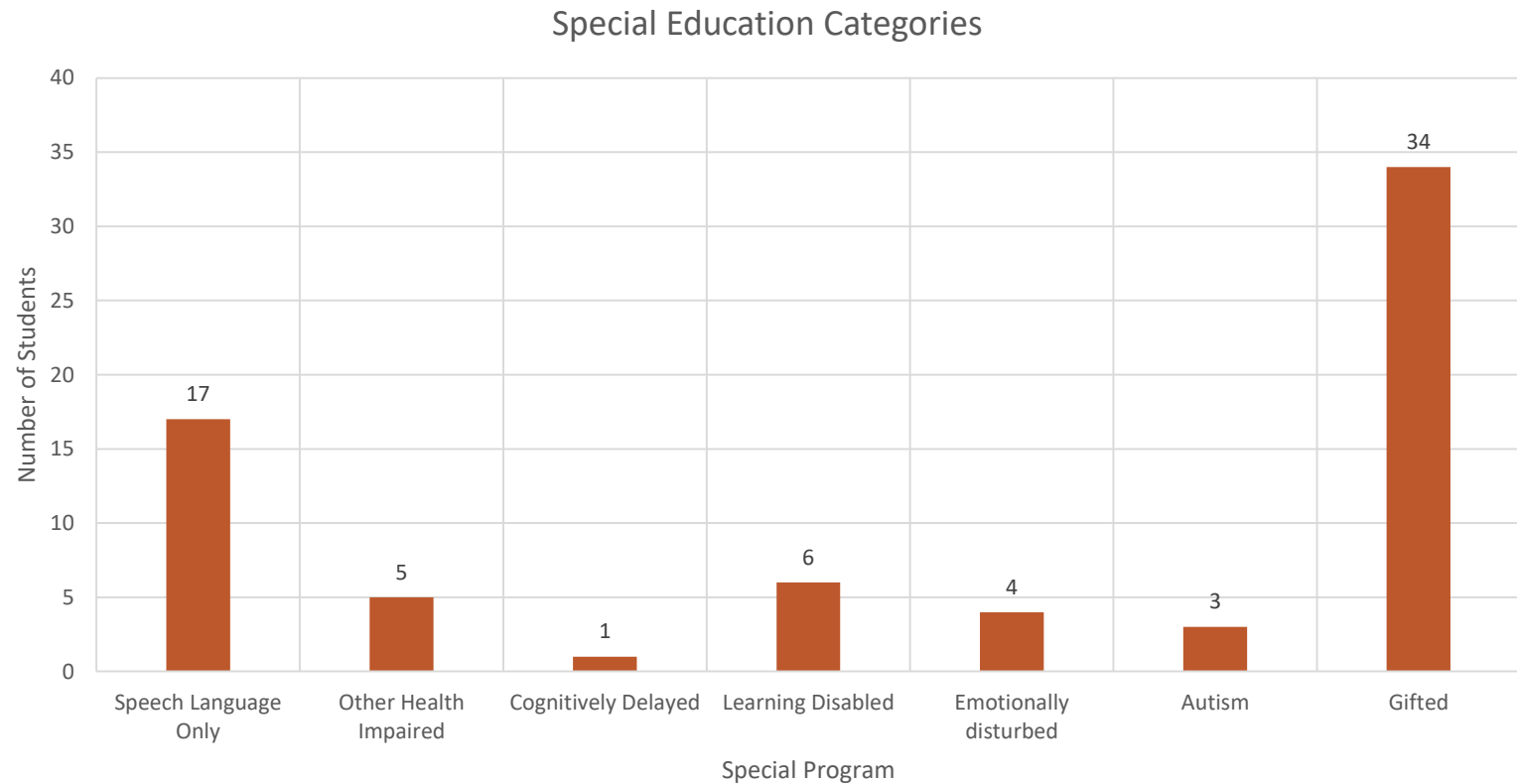
Who are we?

Students by area of residence



Who are we?

Students by special program identification

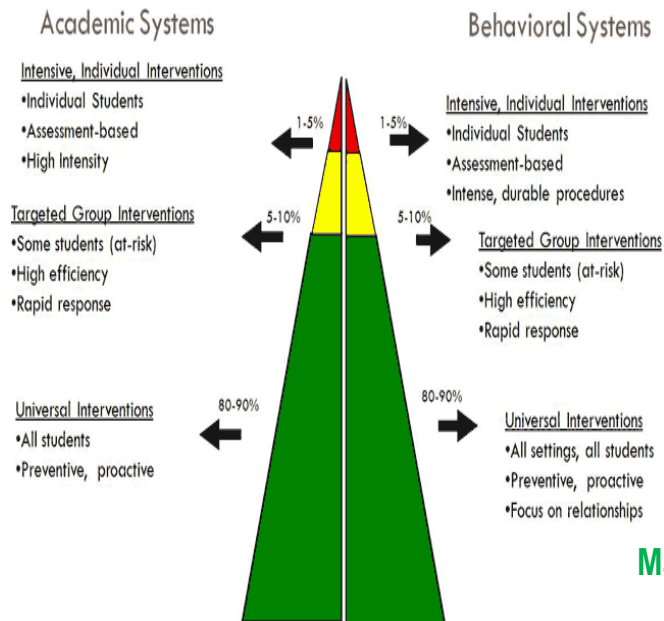


Academic and Behavioral Interventions

Special Education/504
1-1 Academic Support
1-1 Volunteer Support
Core Plus

Progress Monitoring
Core Plus
Volunteers
Flexible Groups
Acceleration

Successmaker
Kahn Academy
iRead
Volunteers
Accelerated Reader
Chess Club
Core instruction
Data assessment/PLC



CSCT
Individual Behavior Plans
Structured Recess
1-1 Supervision and Support
ATeam
Social Skills Groups

Classroom Guidelines
Small Group counseling support
Check in Check Out
Meaningful Work

MBI
Matrix and Universal Expectations
Teaching Behavior Expectations
SOAR Assemblies
Common Area Presentations
Second Step
Kinder Home Visits
Data assessment/PLC

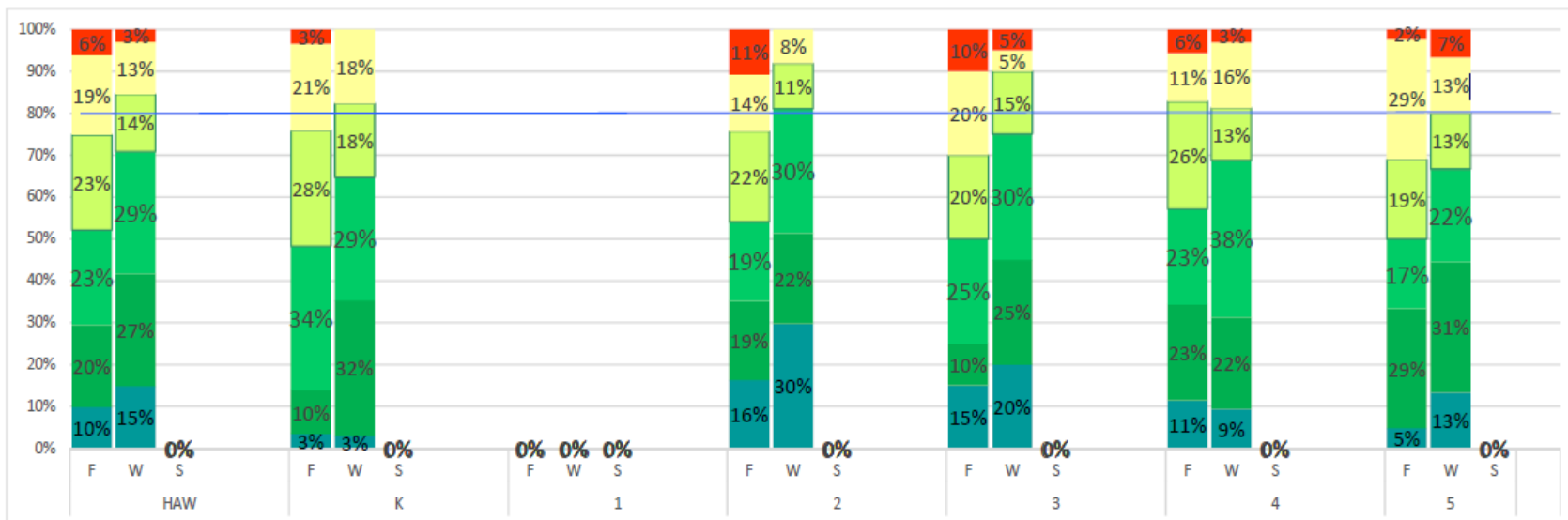
Star Reading 2018

2018-2019

STAR Reading and Early Literacy (K) 2018-19

Overall Percentages for HAWTHORNE

		HAW			K			1			2			3			4			5		
Level	Numerical Range	F	W	S	F	W	S	F	W	S	F	W	S	F	W	S	F	W	S	F	W	S
Advanced	95-99 PR	10%	15%	#DIV/0!	3%	3%	#DIV/0!	#DIV/0!	#DIV/0!	#DIV/0!	16%	30%	#DIV/0!	15%	10%	#DIV/0!	11%	9%	#DIV/0!	5%	13%	#DIV/0!
Advanced	80-94 PR	20%	27%	#DIV/0!	10%	11%	#DIV/0!	#DIV/0!	#DIV/0!	#DIV/0!	19%	22%	#DIV/0!	10%	25%	#DIV/0!	23%	22%	#DIV/0!	20%	11%	#DIV/0!
Benchmark	60-79 PR	23%	29%	#DIV/0!	34%	29%	#DIV/0!	#DIV/0!	#DIV/0!	#DIV/0!	19%	30%	#DIV/0!	25%	30%	#DIV/0!	25%	38%	#DIV/0!	17%	22%	#DIV/0!
On Watch	40-59 PR	23%	34%	#DIV/0!	28%	18%	#DIV/0!	#DIV/0!	#DIV/0!	#DIV/0!	22%	11%	#DIV/0!	20%	15%	#DIV/0!	26%	13%	#DIV/0!	19%	13%	#DIV/0!
Strategic	11-39 PR	19%	13%	#DIV/0!	21%	18%	#DIV/0!	#DIV/0!	#DIV/0!	#DIV/0!	14%	8%	#DIV/0!	20%	5%	#DIV/0!	11%	16%	#DIV/0!	20%	13%	#DIV/0!
Intensive	0-10 PR	6%	5%	#DIV/0!	7%	2%	#DIV/0!	#DIV/0!	#DIV/0!	#DIV/0!	11%	0%	#DIV/0!	32%	5%	#DIV/0!	0%	3%	#DIV/0!	2%	2%	#DIV/0!
% Benchmark & Above		75%	85%	#DIV/0!	76%	82%	#DIV/0!	#DIV/0!	#DIV/0!	#DIV/0!	76%	92%	#DIV/0!	70%	90%	#DIV/0!	83%	81%	#DIV/0!	69%	80%	#DIV/0!

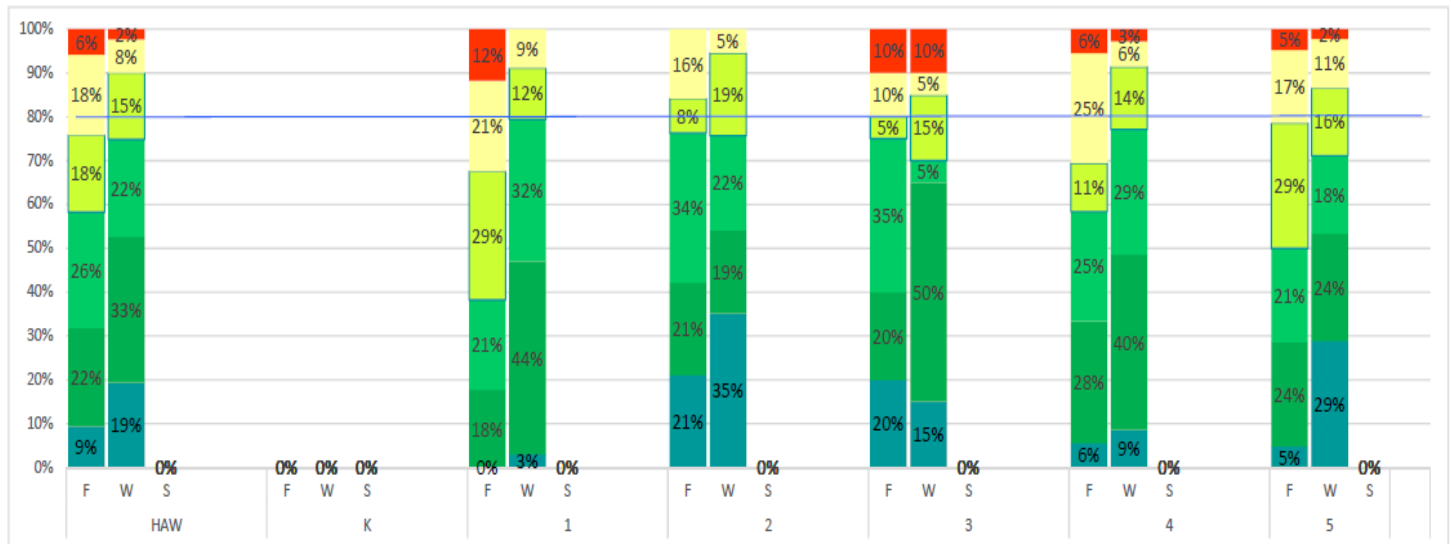


STAR Math Scores 2018

STAR Math

STAR Math 2018-19 Overall Percentages for HAWTHORNE

Level	Numerical Range	HAW			K			1			2			3			4			5		
		F	W	S	F	W	S	F	W	S	F	W	S	F	W	S	F	W	S	F	W	S
Advanced	95-99 PR	9%	13%	#DIV/0!	#DIV/0!	#DIV/0!	#DIV/0!	0%	5%	#DIV/0!	21%	35%	#DIV/0!	20%	15%	#DIV/0!	6%	9%	#DIV/0!	5%	20%	#DIV/0!
Advanced	80-94 PR	22%	33%	#DIV/0!	#DIV/0!	#DIV/0!	#DIV/0!	18%	44%	#DIV/0!	21%	33%	#DIV/0!	20%	50%	#DIV/0!	28%	40%	#DIV/0!	24%	34%	#DIV/0!
Benchmark	60-79 PR	26%	22%	#DIV/0!	#DIV/0!	#DIV/0!	#DIV/0!	21%	32%	#DIV/0!	34%	22%	#DIV/0!	35%	5%	#DIV/0!	25%	20%	#DIV/0!	22%	18%	#DIV/0!
On Watch	40-59 PR	18%	15%	#DIV/0!	#DIV/0!	#DIV/0!	#DIV/0!	29%	12%	#DIV/0!	8%	10%	#DIV/0!	5%	15%	#DIV/0!	11%	14%	#DIV/0!	29%	10%	#DIV/0!
Strategic	11-39 PR	18%	8%	#DIV/0!	#DIV/0!	#DIV/0!	#DIV/0!	22%	9%	#DIV/0!	18%	5%	#DIV/0!	10%	5%	#DIV/0!	25%	6%	#DIV/0!	17%	11%	#DIV/0!
Intensive	0-10 PR	6%	2%	#DIV/0!	#DIV/0!	#DIV/0!	#DIV/0!	12%	0%	#DIV/0!	0%	0%	#DIV/0!	10%	10%	#DIV/0!	6%	3%	#DIV/0!	5%	2%	#DIV/0!
% Benchmark & Above		76%			90%			#DIV/0!			68%			91%			#DIV/0!			79%		





2nd Step and Counseling

CSCT



Comprehensive School and Community Treatment (CSCT)

Comprehensive School and Community Treatment (CSCT) is a mental health service delivered by a licensed mental health center in partnership with a public school. These services are specifically for students who are struggling with serious social, emotional, and/or behavioral challenges. The team consists of one master's level therapist and one bachelor's level behavior specialist who work with an average caseload of 10-20 students.

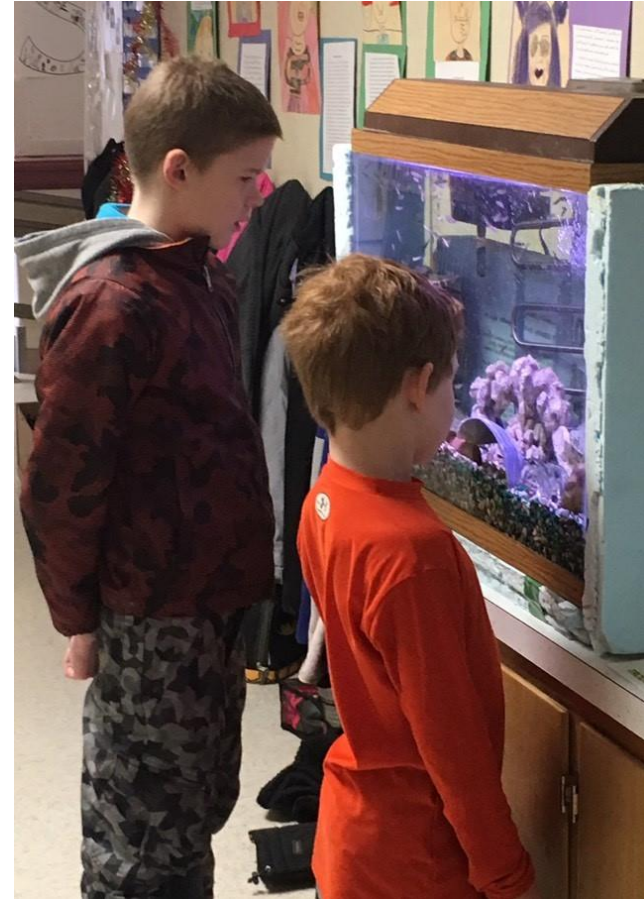


Health Services

School-wide Health Screenings and Classes

- ❖ Vision and hearing for our preschool class, all kindergarten and 1st grade,
- ❖ Vision screening for 3rd and 5th graders,
- ❖ Scoliosis screening for 5th graders,
- ❖ Dental screening for 1st and 3rd graders,
- ❖ Tooth brushing for kinders,
- ❖ Growth and Development for 5th graders

Amazing Extras at Hawthorne 18 Years of Fish!



Montessori Preschool



Deskless Classroom



Facilities Challenges

Built in 1921

Small playground

Small classrooms

Limited parking

Congested drop-off

No line of sight from office to any entrance

Two buildings detached from main building

Closets and Shower rooms as offices and small group rooms

Technology access is improving

Telephone system is outdated

Intercom system is outdated

Summary: We are small and seasoned, And we are Mighty!

Be Strong and Carry On!

Ensuring safety, security and inclusion for all students and families:

- Limiting building access and posting expectations
- Student-led 'Niceness is Priceless' playground safety and inclusion campaign
- Family game nights

*Educating all students based on student interests and need:

- Continued use of PLC time to refine teaching strategies and serve students
- Creative scheduling with staff
- Flexible grouping within and across grade levels
- Working with parents and community volunteers to support small groups and 1-1 student interventions.
- Performance-based assessments and projects at most grade levels
- Teachers training teachers based on areas of talent and expertise

*Creative use of Hawthorne's smaller or partially used spaces:



Hawthorne School

Home of

**STRONG MINDS -
GENTLE HEARTS**



Superintendent
Tyler Ream, Ed. D
324-2001

Business Manager
Janelle Mickelson
324-2040

Board Work Session

Helena High School
1300 Billings Ave Helena, MT 59601

Tuesday February 26, 2019

3:30 pm Tour/4:00 pm Meeting

MINUTES

Attendance – Present unless otherwise noted.

Sarah Sullivan, Board Chair
Terry Beaver, Board Vice Chair
Tyler Emmert, Trustee
Sanjay Talwani, Trustee
Luke Muszkiewicz, Trustee
Jeff Hindoen, Trustee
Elizabeth “Libby” Goldes, Trustee
Jennifer Walsh, Trustee - Unexcused

Dr. Tyler Ream, Superintendent
Josh McKay, Assistant Superintendent
Janelle Mickelson, Business Manager
Barb Ridgway, Chief of Staff
Stacy Collette, Human Resources Administrator
Jilyn Chandler, Data & Assessment Administrator
Sean Maharg, Special Education Administrator
Sean Morrison, Special Education Administrator
Pat Boles, Technology Administrator
Kalli Kind, Facilities Administrator
Brian Cummings, Jim Darcy Elementary School Principal
Trish Klock, Bryant Elementary School Principal
Brett Zanto, Capital High School Principal

Steve Thennis, Helena High School Principal

Stephanie Thennis, Helena High School Assistant Principal
Gabby Clow, Helena High School Assistant Principal
Willie Schlepp, Helena High School Assistant Principal

PRESENTOR at Helena High School: Steve Thennis

I. TOUR OF SCHOOL/PLEDGE OF ALLEGIANCE/CALL TO ORDER

Sarah Sullivan called the session to order at 4:17 p.m. and led the Pledge of Allegiance.

II. REVIEW OF AGENDA

No Changes

III. PRESENTATION

1. Helena High School

Steve Thennis, Principal of Helena High School, showed the attached PowerPoint presentation. Principal Thennis began by highlighting the fact that Helena High strives to offer students as many opportunities as possible. The district was named to the 9th Annual AP Honor Roll. This is the 7th year we have received this distinction. There were three students named as Presidential Scholar Nominees this year: Aiden Morris, Elena Skibicki and Ben Ries-Roncalli. These students are among the top 600 in the nation for their ACT scores. The Shape MT program named Linda Paull for their highest distinction and honor for her contributions to the area of health and PE for students. There are 5 National Merit Finalists from Helena High School this year. They are Sonja Severtson, Aurora Boutin, Aiden Morris, Elena Skibicki and Ben Ries-Roncalli. State wrestling champion at 160 pounds was Devin Crawford. There were also 2 state champions for swimming, Robert Wagner and Parker Keller. The Helena High School Boys Swim Team took 3rd place in the State Swim Meet, which is pretty amazing due to our lack of aquatics facility. The Prudential Spirit of Service Recipient for the state of Montana was Helena High student Trevin Maharg. Trevin organized a special prom for disabled students. Hannah Muszkiewicz was a National Speech and Debate qualifier from the tournament in Billings. The Helena High School Thespian Troupe captured second place, behind Capital High School. Teacher Rob Loveridge was recently named the VFW Montana Teacher of the Year and is in the running for national recognition. There was a wonderful performance by the Helena High School Choir.

The mission of Helena High School is “to provide a strong foundation for life-long learning by nurturing, challenging, and guiding all students toward their maximum academic, aesthetic, physical, social and emotional potential. The current student population of Helena High School is 1438 students. Of that student population 9% of students are a minority, 9% of students are identified as having disabilities, 48% of students qualify for free or reduced-price meals, 69% of students go onto Post Secondary education and the graduation rate is currently 79% which is disappointing but not surprising. The last graduating class

unfortunately dealt with classmate suicides that affected students significantly and their decision to continue in school or not.

Helena High prides themselves on their Freshman Transition. They have developed as many safety nets as possible to allow students to succeed in their freshman year. Helena High is the only AA school that is currently doing a full academy with students. The World Cultures, Earth Science and English teachers stay with the students throughout their day. There is a Transitions class that allows students deemed at risk at the middle school level to participate in for goal setting, literacy strategies and study skills.

There are approximately 300 students pre-registered for dual credit classes which by the end of their high school career could give students enough credit for one full semester of college. These classes are taught on campus during the regular class day. There are 53 students enrolled in the early access program at Carroll College.

There are multiple ways for students to have their voices heard. Helena High provides My Voice Surveys and My Voice Focus Groups, as well as home visits, Leadership Lunch and Student Council. Once a month Principal Thennis has a Leadership Lunch that involves around 125 students that are the team captains of every sports team, every executive committee of every club and organization and the student council students. There are roughly 70 clubs within the school currently.

Academically, Helena High has multiple AP class offerings and have just added AP Capstone. The only other school in Montana offering AP Capstone is Missoula Sentinel. The ACT Trend Data shows that the state percentages are decreasing and Helena High percentages are increasing. All juniors take the ACT test. The Aspire testing is now being done with students in grades 8-10. English and Reading benchmarking is now taking place three times per year.

Trustee Luke Muszkiewicz inquired about the 48% free or reduced meals rate, asking if this comprises of the percentages from the feeder schools. Principal Thennis stated that yes, this percentage comes from the feeder schools with approximately 29% of students returning free or reduced meal applications this year. Trustee Luke Muszkiewicz thanked the Helena High staff for their effort to communicate the high school options to students incoming from East Helena and being respectful of the choice they can make to attend Helena High or remain at the East Helena High School.

Trustee Libby Goldes asked about how Helena High MBI standardizes expectations for students and adults. Principal Thennis stated that adults are stationed at the classroom doors to greet students coming in, there are universal expectations for classroom rules across the board that are non-negotiable, all course syllabus and grading scales are outlined as well. Helena High coordinates

with the Helena Middle School to make sure that incoming freshman are apprised of the expectations when they come into Helena High. This allows vertical alignment district wide.

Trustee Sanjay Talwani asked about the early warning system that Helena High uses to identify students that are most likely to drop out. Principal Thennis stated that the team looks at grades and attendance and issues scores on a scale of 1-4. There are currently 80 freshmen identified at mid-year as high risk. Approximately 250 students' school wide have been identified. The PowerSchool system allows for easier monitoring as it is calculating data daily. When a student is identified as high risk, staff contacts the parents and set up meetings. The school counselors are the first line of defense. Administrators have been alarmed by the 79% graduation rate and that is the lowest it has been in 10 years. The state average graduation rate is 86%. They are hopeful early interventions will help increase the graduation rates.

Dr. Ream mentioned that some Helena School District programs create drop outs, such as Access to Success, where students have to "drop out" of high school to enroll. This affects the graduation rate Helena High is seeing. Also, students that enroll and then 2 days later drop out affects the percentage also.

Board Vice Chair Terry Beaver stated that he felt Helena High was doing a great job evolving and providing opportunities for all students.

Board Chair Sarah Sullivan stated she felt that the communication efforts of Helena High staff to reach kids that aren't in the main stream were meaningful.

Trustee Tyler Emmert asked Principal Thennis about the life expectancy of the Helena High School building. Principal Thennis responded that the life expectancy of this building is long past and they are falling behind other AA schools.

Board Chair Sarah Sullivan thanked Principal Thennis for his presentation.

IV. GENERAL PUBLIC COMMENT

None

V. NEW BUSINESS

1. Items for Action

a. 1-22-19 Board Work Session Minutes

Motion: Luke Muszkiewicz moved to approve the 1-22-19 Board Minutes. Terry Beaver seconded the motion.

Public Comment: None

Vote: 7-0 The Motion carried.

- b. Approval of Resolution of Intent to Increase Non-Voted Levies
Motion: Jeff Hindoien moved to approve the Elementary School District Resolution of Intent to Increase Non-Voted Levies. Luke Muszkiewicz seconded the motion.
Public Comment: None
Vote: 7-0 The Motion carried.

Approval of Resolution of Intent to Increase Non-Voted Levies
Motion: Jeff Hindoien moved to approve the High School District Resolution of Intent to Increase Non-Voted Levies. Luke Muszkiewicz seconded the motion.
Board Comment: Trustee Luke Muszkiewicz thanked the taxpayers for investing in our kids and stated this is a good use of funding for more efficient resources.
Vote: 7-0 The Motion carried.

VI. SUPERINTENDENT REPORT

Dr. Tyler Ream reported that there was a staggered start to the school day today. It went very well with only a few issues with special education busses on roads that hadn't been cleared yet. Attendance is currently down 4-5% due to this winter storm. Dr. Ream thanked the team, and especially the bus drivers, for everything they did and helping with a smooth staggered start.

VII. BOARD COMMENTS

Trustee Libby Goldes stated that the Health Benefits committee has began interviews for finalists on the TPA for medical and pharmaceutical benefits. They are on track to present to the Board on March 12th.

VIII. ADJOURNMENT

There being no other topics for future meetings and no public comment on issues not on the agenda, the meeting adjourned at 6:11 pm. The next Board Meeting will be held on March 12, 2019 at the Ray Bjork Learning Center 1600 8th Avenue Helena, MT 59601.

Respectfully Submitted,

Sarah Sullivan, Chair

Angie Ford, Recording Secretary

Date



Superintendent
Tyler Ream, Ed.D
324-2001

Business Manager
Janelle Mickelson
324-2040

Board of Trustees Special Meeting

May Butler Center
55 S. Rodney

Wednesday March 6, 2019
1:00pm

Minutes

Attendance

Sarah Sullivan, Board Chair
Terry Beaver, Board Vice Chair
Elizabeth “Libby” Goldes, Trustee
Jeff Hindoien, Trustee
Tyler Emmert, Trustee

Tyler Ream, Superintendent
Josh McKay, Assistant Superintendent
Janelle Mickelson, Business Service Administrator
Kalli Kind, Facilities and Transportation Director
Barbara Ridgway, Chief of Staff
Jilyn Chandler, Data and Assessment Administrator
Stacy Collette, HR Administrator

I. CALL TO ORDER

Board Chair, Sarah Sullivan called the meeting to order at 12:00pm.

II. REVIEW OF AGENDA

No Comment

III. NEW BUSINESS

1. Items for Action

- a. Approval of HSD Resolution to declare an unforeseen emergency pursuant to 20-3-322(5) and Authorize the Superintendent to meet district needs without complying with bidding requirements pursuant to 20-9-204 (3):
Kalli Kind and Superintendent Ream started discussion regarding Helena High School. Kalli Kind, “they have located the second break and will clamp it...they will determine if that is the last break...we will see if there is any additional water that surfaces...this is a temporary repair to reestablish service...they will have to work on it more this summer...it’s just old infrastructure...”. Jeff Hindoien asked, “Is this the city’s or our service line?”. Kalli answered, “We are responsible for everything to the main...so everything from the building to the main is ours...it’s our service line...”. “How many feet below the surface is the pipe?”,

Helena Public Schools foster dynamic educational experiences that prepare all students for life.

Assistant Superintendent McKay asked. “It’s eight feet below the surface, it doesn’t have anything to do with the temperature, it’s just an old pipe...”, stated Kalli. “The water intrusion wasn’t a problem because it froze.”, stated Superintendent Ream. Terry Beaver asked if it is a “service line or a main” because the document refers to it as a “main”. Kalli answered, “The jargon used is the “main service line...we will not pay for the main, we will pay for the pipe.” “Can we make this say service line?”, asked Terry. Motion to approve the resolution with the change to the language. “Strike *main* and add *service line*”. Jeff Hindoein moved to “approve the resolution declaring the service line break at Helena High School an unforeseen emergency pursuant to 20-3-322(5) and authorize the Superintendent to proceed without complying with requirements pursuant to 20-9-204 (3)”. Libby Goldes seconded. No public comment. Terry Beaver asked to clarify that this does not apply to “summer repairs”. “This is only for the unforeseen emergency, not summer”, Sarah Sullivan answered. Motion carries.

IV. GENERAL PUBLIC COMMENT None

V. SUPERINTENDENT’S REPORT

“We will be working with OPI on make-up days.”, Superintendent Ream stated.

VI. ADJOURNMENT