



The Helena Public Schools educate, engage, and empower each student to maximize his or her individual potential with the knowledge, skills and character essential to being a responsible citizen and life-long learner.

Board of Trustees Teaching and Learning Committee

Wednesday, October 2nd, 2024 – 12:00 PM

This meeting will occur at the Lincoln Center (1325 Poplar St., Helena, MT. 59601) and via Microsoft Teams.

To participate remotely, please use this link on Microsoft Teams:

[Join the meeting now](#)

AGENDA

I. CALL TO ORDER / INTRODUCTIONS

II. REVIEW OF AGENDA

III. GENERAL PUBLIC COMMENT

This is the time for comment on public matters that are not on the agenda. Public matters do not include any pending legal matters, private personnel issues, or private student issues. Please do not attempt to address such issues at this time or you will be ruled out of order. The Board cannot enter into a discussion during General Public Comment.

IV. REVIEW OF MINUTES

Review of 09.04.24 Teaching & Learning Committee Meeting Minutes

V. ITEMS FOR INFORMATION/DISCUSSION

- A. Fall Data and Corresponding Curriculum Work
- B. New MAP Assessment 9-12
- C. Planning for MAST

VI. BOARD COMMENTS

VII. ADJOURNMENT



The Helena Public Schools educate, engage, and empower each student to maximize his or her individual potential with the knowledge, skills and character essential to being a responsible citizen and life-long learner.

Board of Trustees Teaching and Learning Committee Meeting

Wednesday, September 4th, 2024

12:00pm

Lincoln Center & TEAMS

MINUTES

ATTENDANCE

Trustees: *Others:*

Kay Satre, Committee Chair
Rachel Robison, Trustee
Jennifer McKee, Vice Chair

Barb Ridgway, Chief of Staff
Jane Shawn, HEA President
Josh McKay, Assistant Superintendent
Justine Alberts, Curriculum Director
Ashlie Buresh, TOSA
Kayla Lunnon, TOSA
Candice Delvaux, Executive Assistant
Karen Ogden, Communications Officer
Kaitlyn Hess, Assessment and Federal Programs
Gary Myers, Director of Educational Technology
Lona Carter, Student Services Director
Todd Verrill, Facilities Director

I. CALL TO ORDER/INTRODUCTIONS

The meeting was called to order at 12:01 p.m. by Teaching and Learning Committee Chair, Kay Satre.

II. GENERAL PUBLIC COMMENT

There was no general public comment.

III. REVIEW OF AGENDA

No changes were requested to the agenda.

IV. APPROVAL OF MINUTES

The committee reviewed and accepted the minutes from the 5.1.24 Teaching and Learning Committee Meeting.

V. ITEMS FOR INFORMATION/DISCUSSION

A. Purpose of the T&L Committee This Year-Understand the Processes in Place At Each Level

Ms. Justine Alberts, Curriculum Director, shared the purpose of the Teaching and Learning Committee for this year. Ms. Alberts stated that when the Teaching and Learning Committee meets they will be provided with a snapshot of what is happening in buildings across the district and to discuss topics such as WIN groups, instructional framework, PDSA cycles, curriculum, scope and sequence at different levels, what students are learning and how they are performing along with anything else the Teaching and Learning Committee may want to review and discuss. The Trustees mentioned that they appreciate being able to get some specific snapshots of things that are happening in domains in addition to certain broader frameworks and data information.

B. Review of the Action Plan & Data: Revisit Any Questions or Big Ideas

The Teaching and Learning Committee reviewed the updated Helena Public Schools District Action Plan and Data. The action plan begins with student achievement goals. The Helena Public Schools is committed to the success of every student. These action plan goals are built around critical benchmarks in each state of a student's education, tracking progress and growth to ensure students are on a trajectory for success. Next, the Teaching and Learning Committee reviewed action plan steps and goals. Each goal includes a reference to effect sizes from John Hattie's Visible Learning: The Sequel (2022). They have aligned influential instructional and systematic strategies to emphasize the importance of each goal and outline the research that supports this plan. The Teaching and Learning Committee had a robust discussion about MAST testing in the district and the use of testlets, as well as professional development time in the district. Ms. Justine Alberts, Curriculum Director, and Ms. Kaitlyn Hess, Assessment and Federal Programs, answered any questions the Teaching and Learning Committee had regarding the action plan.

C. Introduce New TOSAS: Purpose of Their Efforts and Work This Year In Terms of Teacher Support, Planning, and Systematic Sustainability (Look at Implementation Timeline)

Ms. Alberts introduced the TOSAs for this year. Ms. Melissa Romano's special assignment is supporting the K-5 math curriculum implementation. Ms. Ashlie Buresh is a half-time TOSA, and her special project is supporting K-8 literacy. Ms. Kayla Lunnon is also half-time TOSA and her

special project is working with 6-12 on systems, new assessments, and math. Ms. Alberts answered any questions the Teaching and Learning Committee had regarding TOSAS.

VI. BOARD COMMENTS

The trustees expressed their appreciation for the hard work it takes for everyone in the district to prepare for the start of the school year and their appreciation of what was presented today at the meeting.

VII. ADJOURNMENT

The meeting was adjourned at 12:46 p.m. by Trustee Kay Satre.



Helena
Public Schools

A great place to learn

Fall Data and Curriculum Overview

Teaching and Learning Committee October 2, 2024

Agenda



Data and
corresponding
curriculum work



New MAP Assessment 9-12



New MAST Assessment

Mission & Vision

Vision: To cultivate a vibrant and inclusive educational environment where every student excels academically, socially, and emotionally, empowered by innovative teaching practices, ***comprehensive assessment***, and robust support for teachers and administrators throughout the system

Mission: Our mission is to foster academic excellence and equity by delivering a rigorous and culturally responsive curriculum, supporting educators through continuous professional development, ***utilizing data-driven assessment practices to inform instruction***, and ensuring all students have the opportunities to succeed. We are committed to collaborating with students, families, and the community to create a supportive and inclusive learning environment that prepares every student for lifelong learning and success.

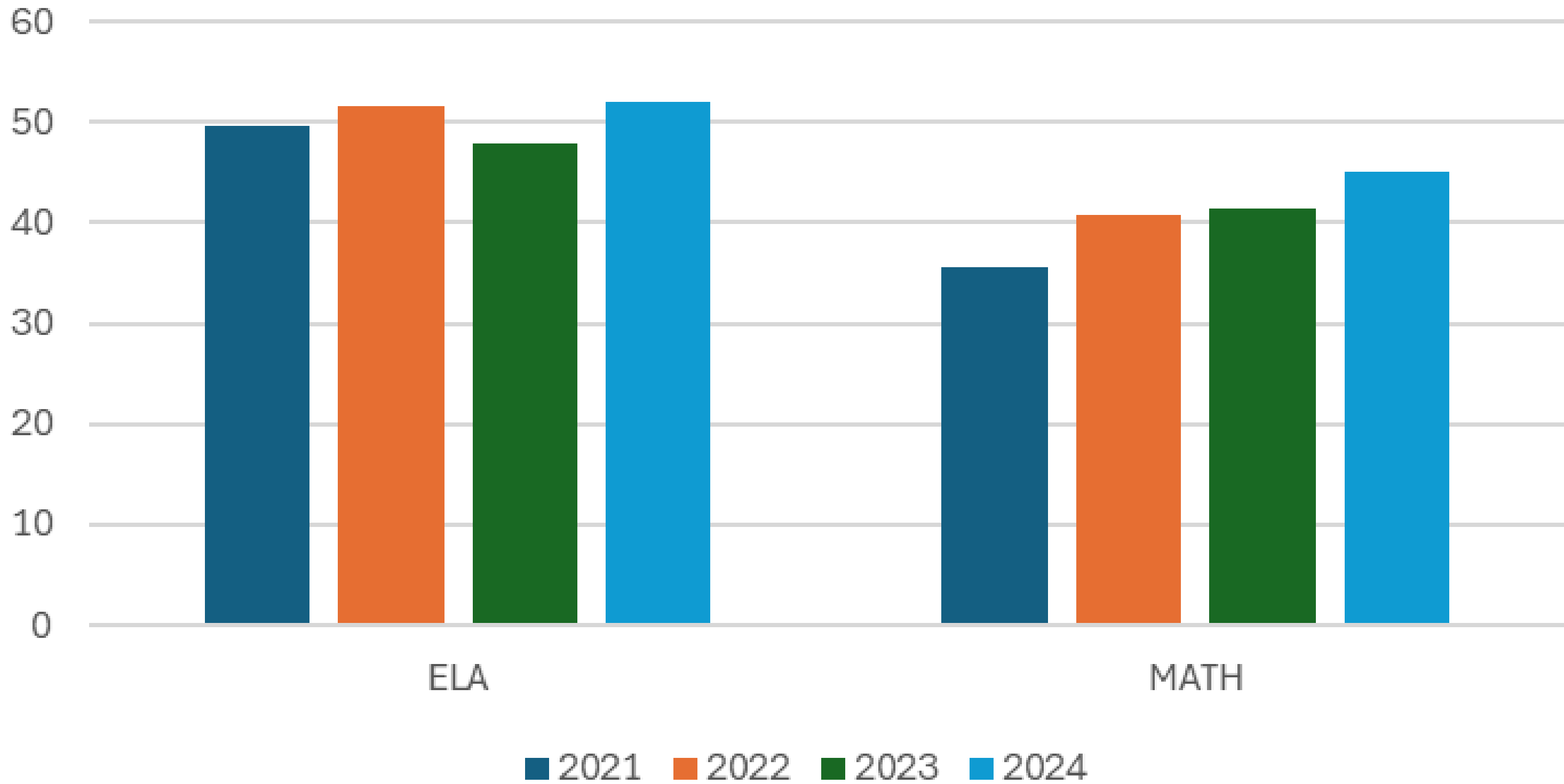
Data Overview

- **Where are we starting strong?**
- **Where do we need to prioritize work?**

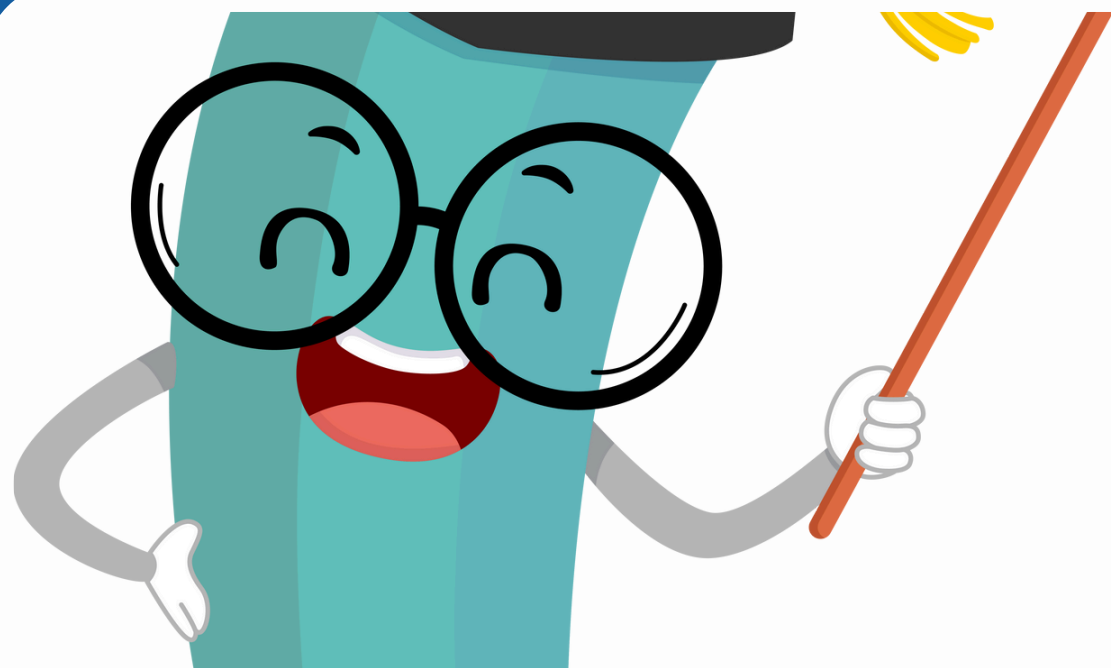


3-5 SBAC Data

SBAC Trend Data 2021-2024



K-5 Curriculum Work



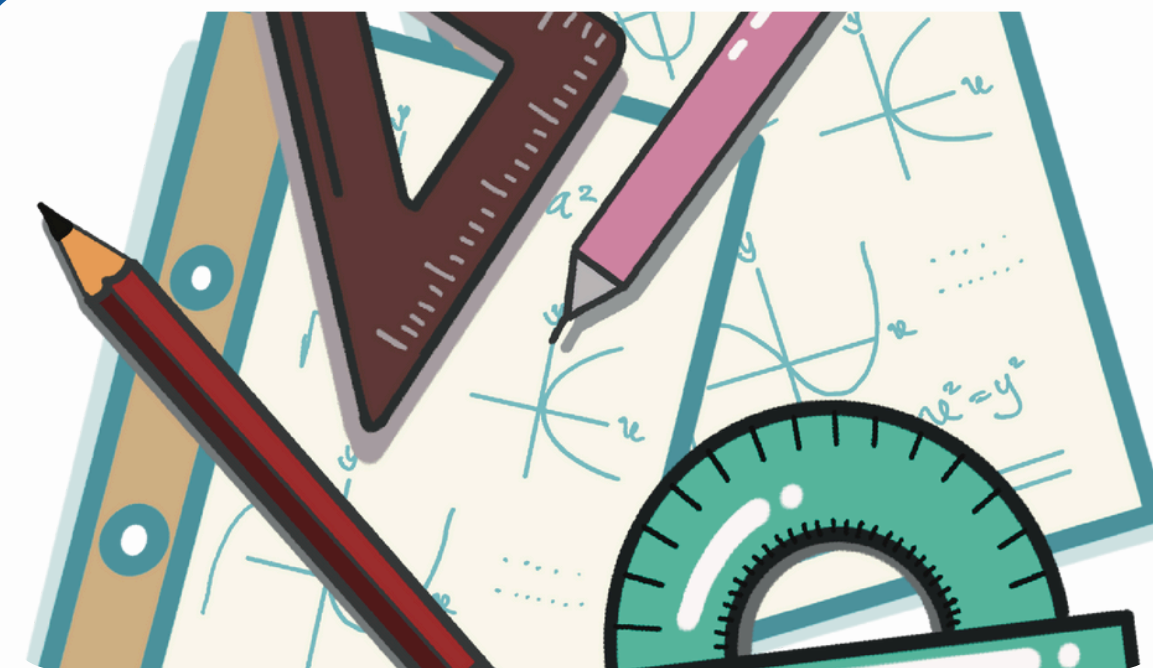
Grade Level and Task Force Meetings

Teachers from around the district met in grade level teams and as a Standards Based Grading Task Force to collaborate, learn and create.



Professional Development

Professional Development will begin, after school, to support WIN planning, next steps in Eureka and intervention, and using our data.

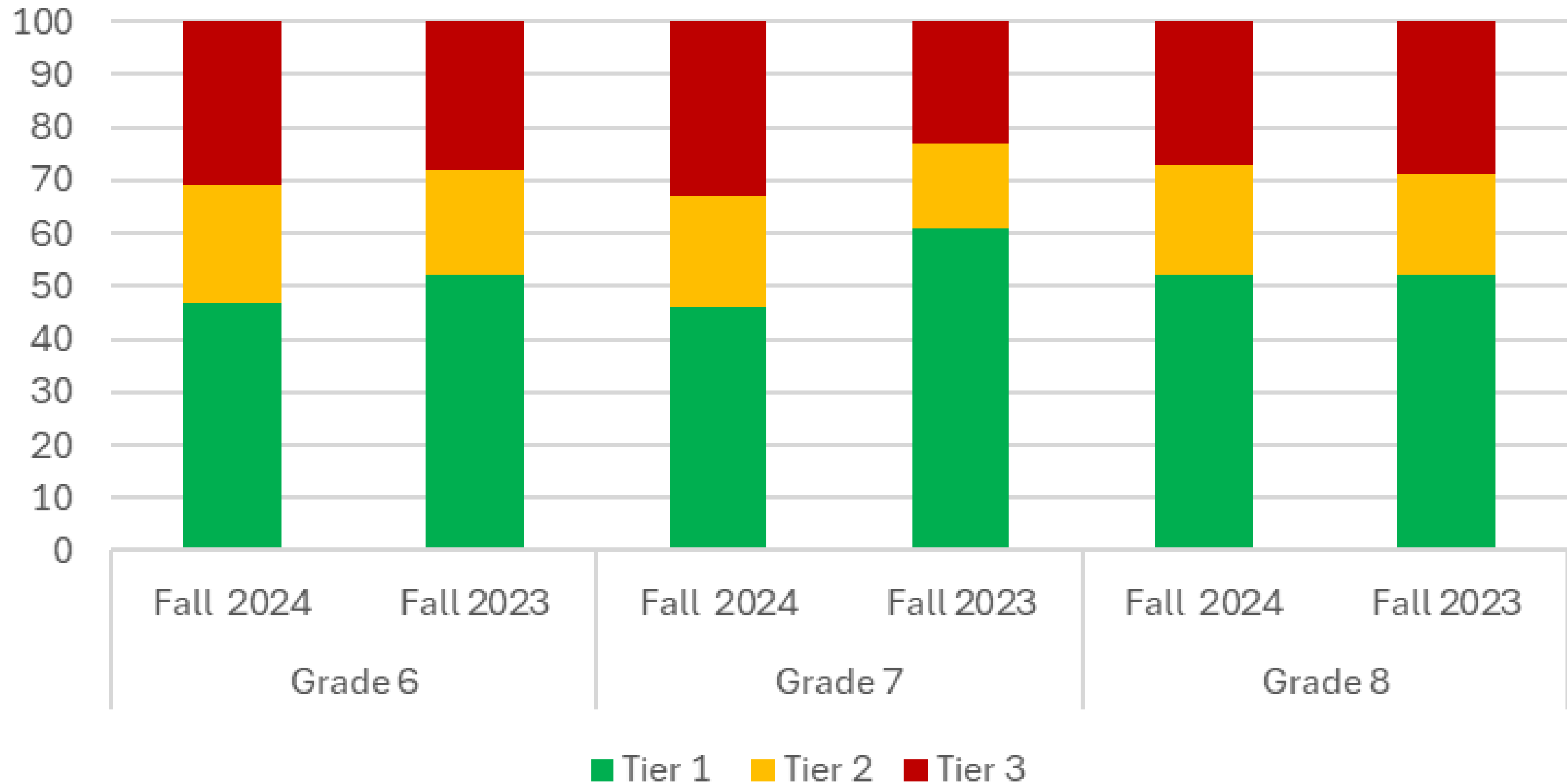


Forward Thinking

Looking into opportunities to strengthen interdisciplinary learning in addition to sustaining our literacy and learning in ELA. Standards work and implementation is coming.

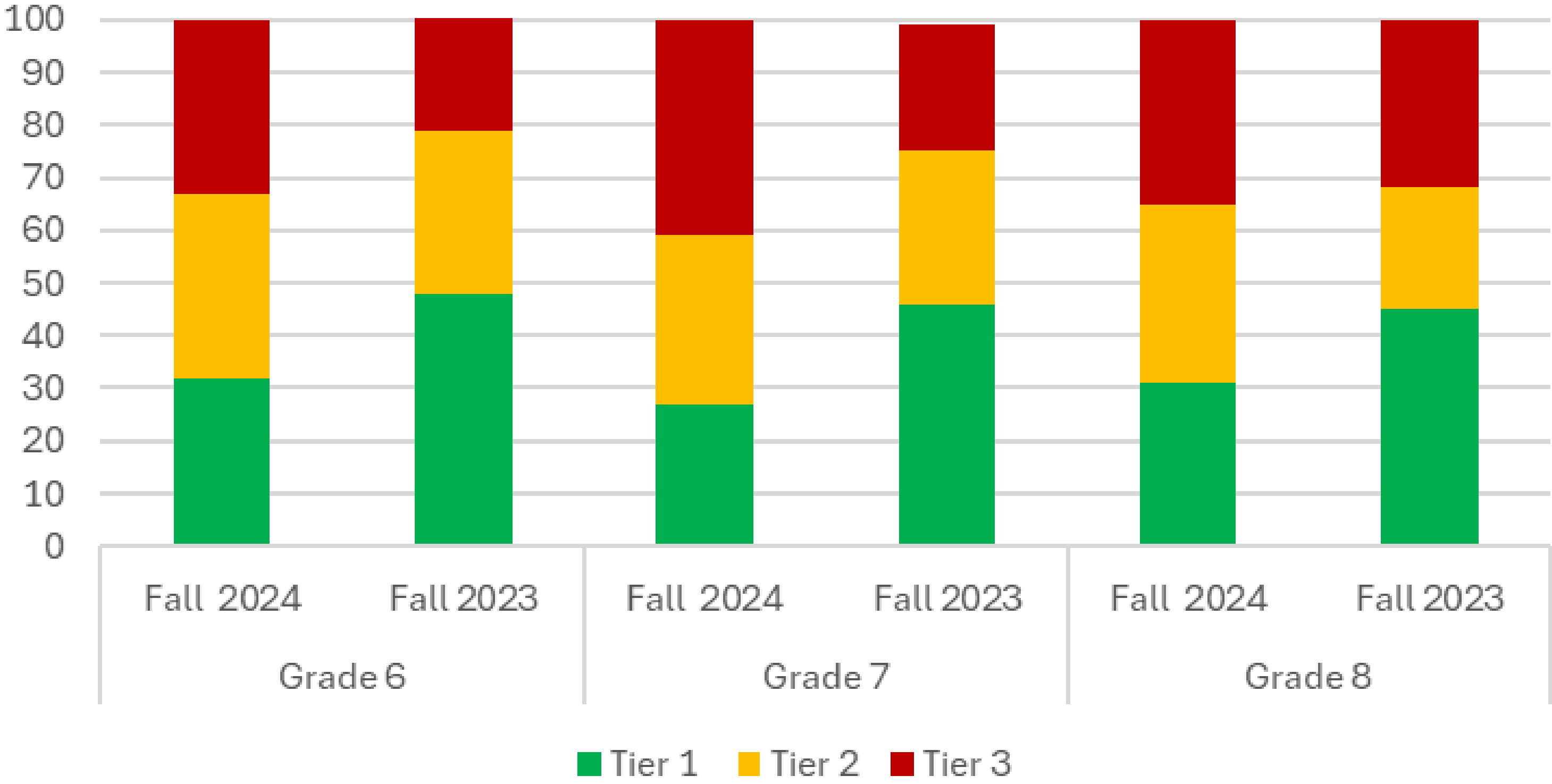
6-8 Fall iReady Trends

Fall ELA iReady



6-8 Fall iReady Trends

Fall Math iReady



Middle School Curriculum Work



Math Curriculum Meeting

Purpose: Align MAST Testlets.

Outcomes: Common pacing, collaboration, unified decisions and alignment cross town, desire to grow as a team. Work to continue in the spring - reflection!



Middle School Writing Supplement

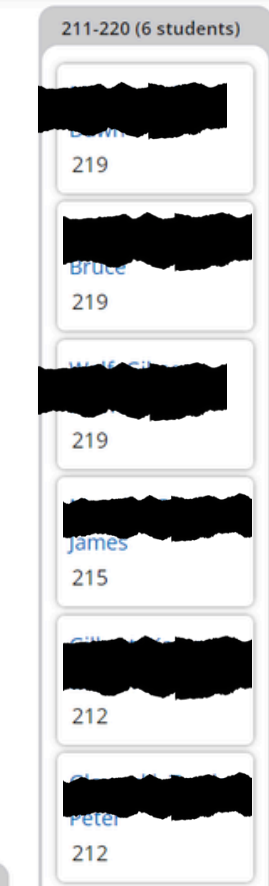
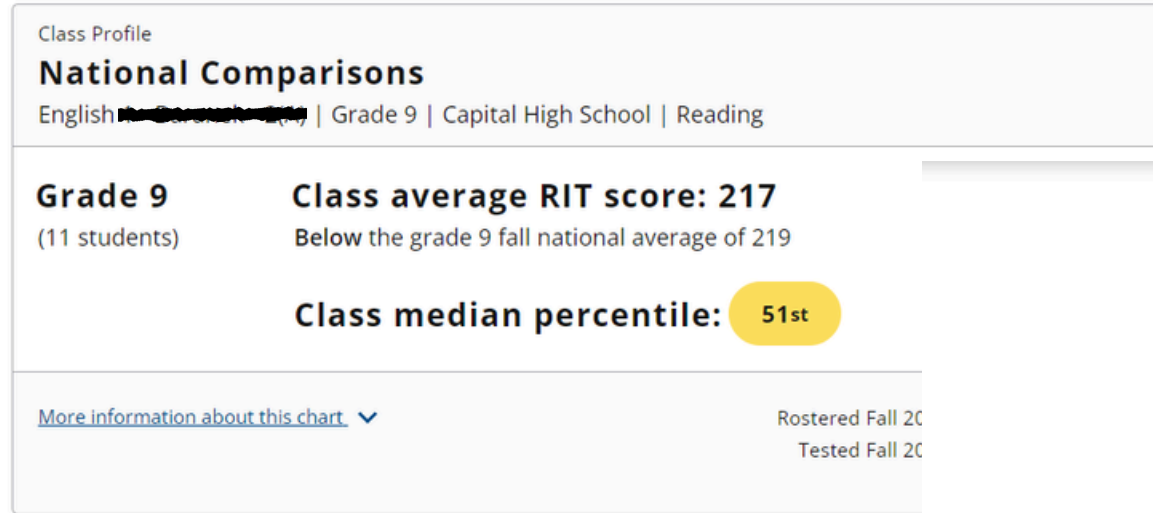
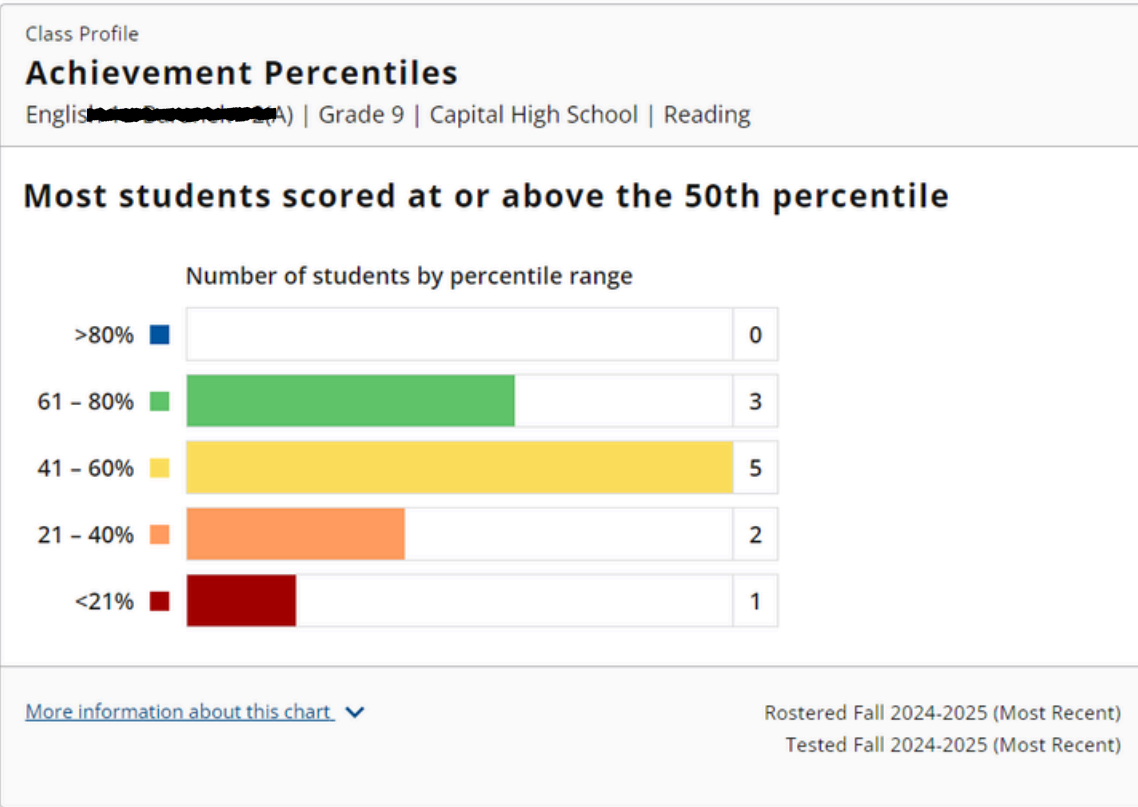
Through the 6-12 ELA work started last summer, groups are strengthening their instructional units and identifying areas to supplement instruction based on need. Sentence Proficiency and cross town collaboration.



Social Studies

Work coming up! Curriculum resource review and group work to follow and start this month. Standards, discussions and alignment.

9-10 MAP (New assessment)



MATHEMATICS 220

219

Standard Error: +/- 3.46
Possible range: 216-222
8/28/2024 - 80 minutes
Rapid-Guessing %: 20%
Est. Impact of Rapid-Guessing % on RIT: -3
Growth: Reading 6+ CCSS 2010 1.1

LANGUAGE USAGE ---

SCIENCE ---

181-190 (1 student)

STRUCTURAL AREAS ?

Group by: STANDARD TOPIC Grade(s): All Grades Show learning statements: SHOW HIDE View learning statements to: REINFORCE DEVELOP INTRODUCE

All Instructional Areas

Literary Text 214 ± 8.43

Vocabulary 219 ± 5.85

These learning statements apply to Riley's current RIT score:

Literary Text

- Analyze Point of View, Features, and Structure
 - Author's Craft: Foreshadowing, Flashback

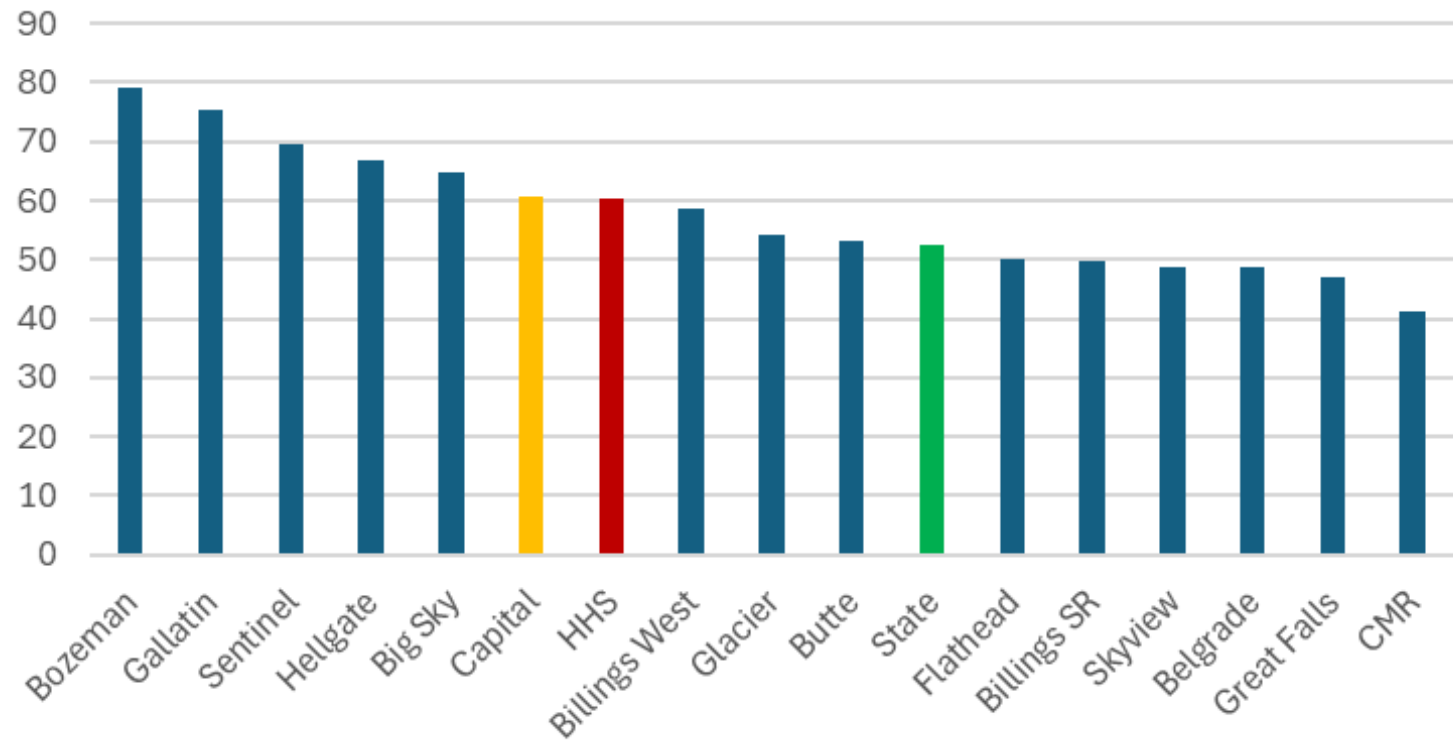
Riley is ready to DEVELOP these skills (211-220):

- Analyzes use of flashback in literary text

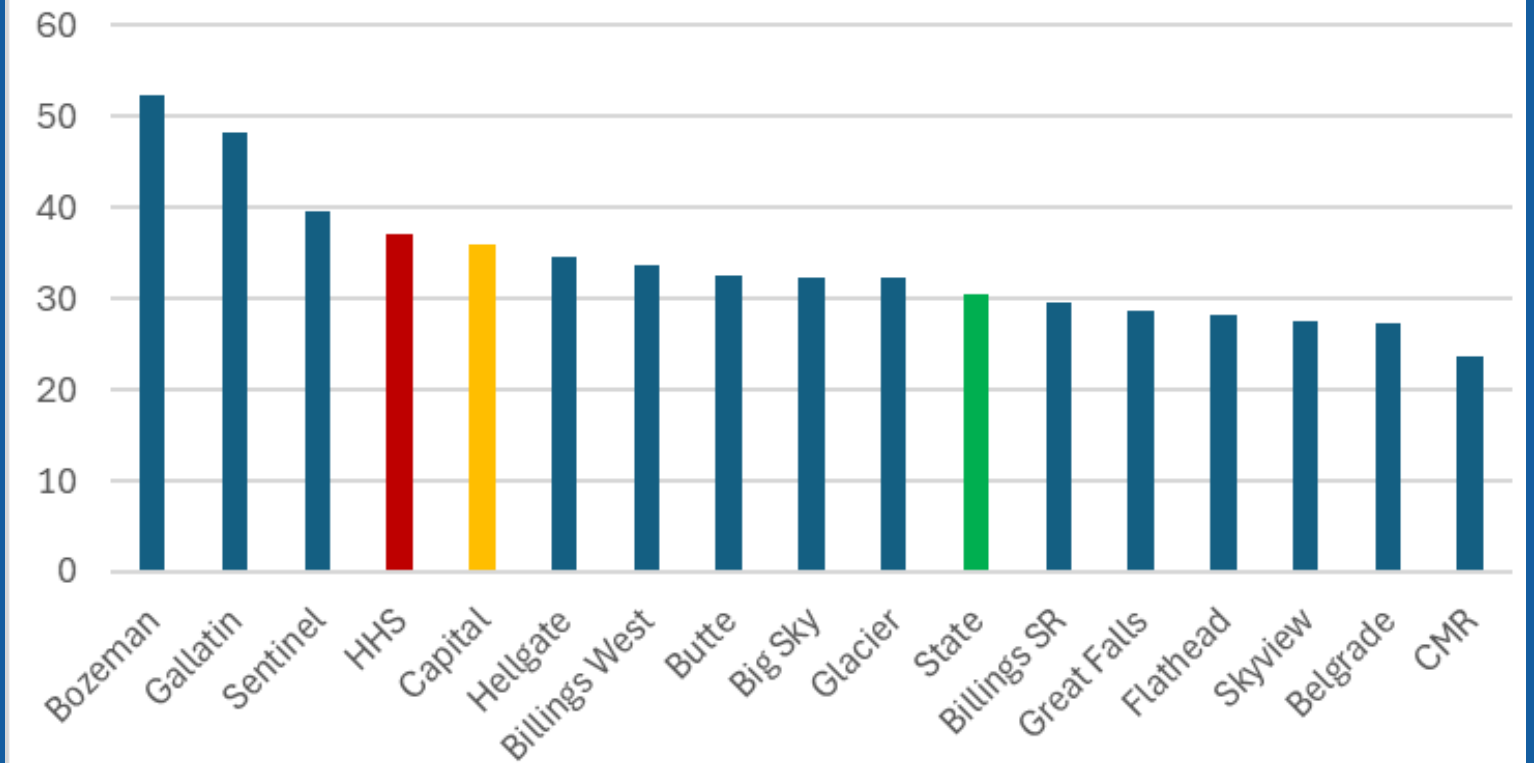
- Author's Craft: Perspective, Attitude

AA ACT

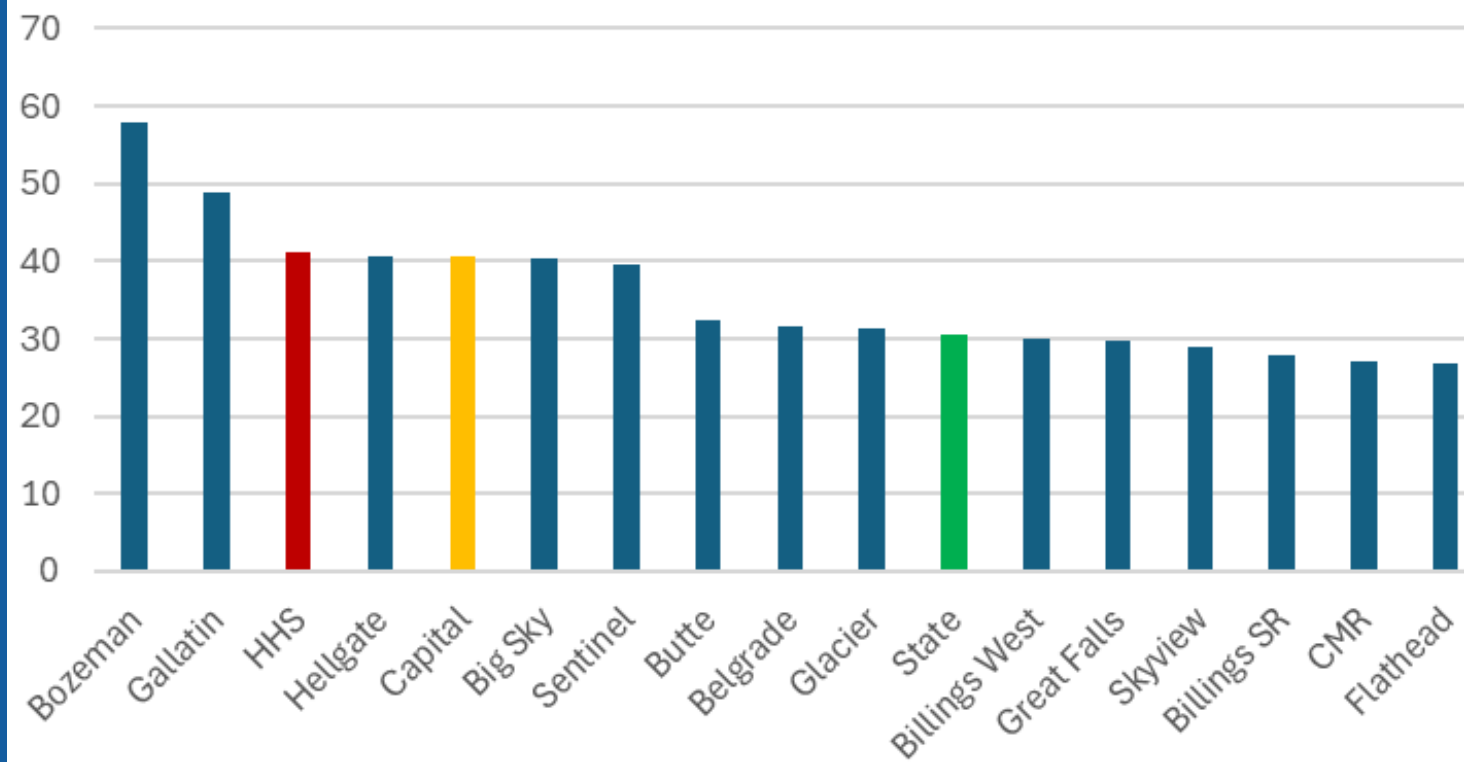
ELA



Math



Science



High School Curriculum Work



Intervention

New assessment data is giving us new information to use. Teams are learning what intervention looks like at the high school.



9-12 ELA

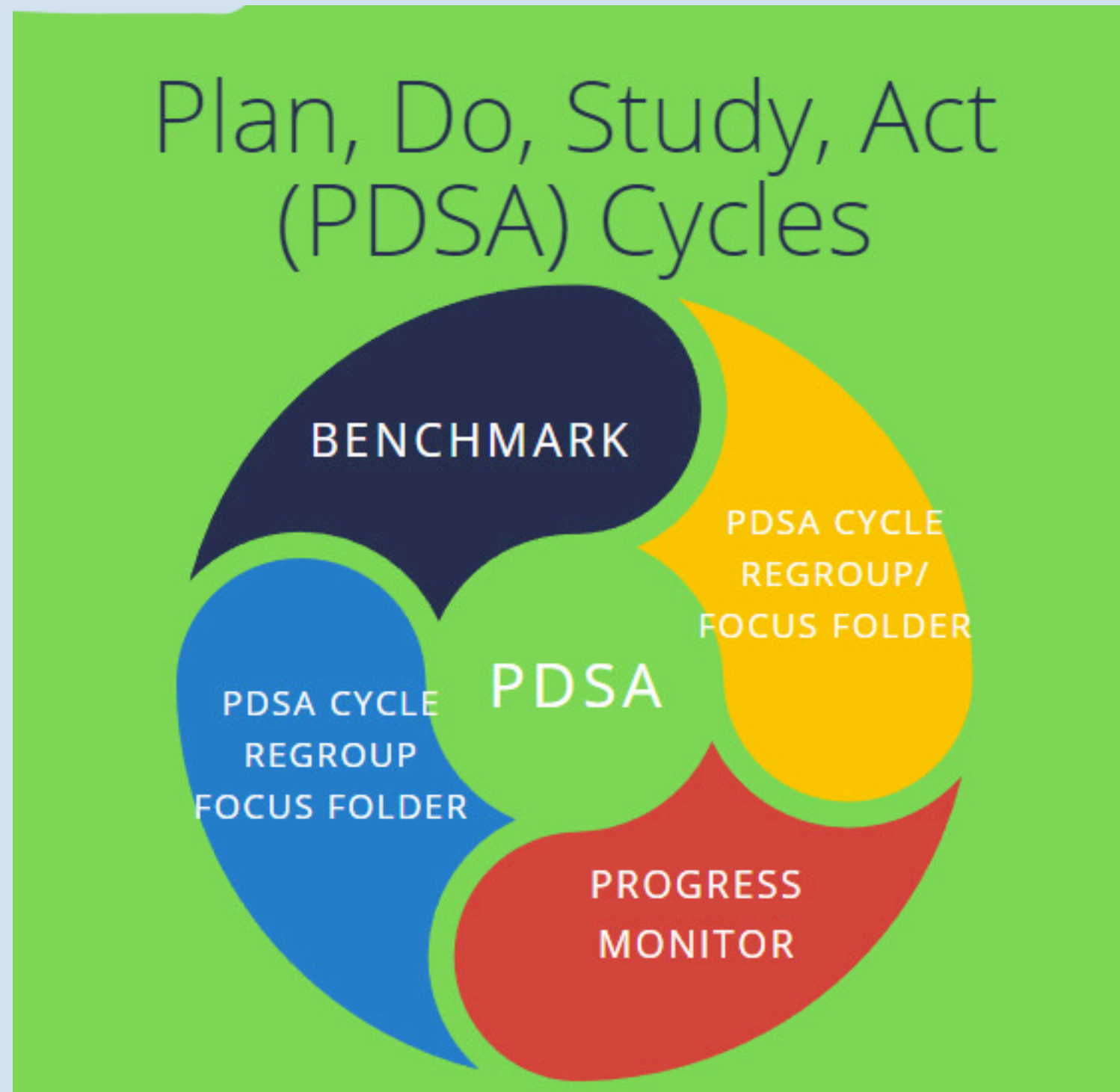
In collaboration with 6-8, groups met last year to begin reviewing their instructional units. Groups will meet this year to continue learning and developing stronger units of study. Standards are also being revised.



Looking Forward

Again, forward thinking. Standards are proposed for adoption with Math. Teams are continuing to review and revisit student learning.

Data Driven Instructional Decision Making Process



- **School Leadership Teams**
- **PLC groups**
- **WIN groups**
- **Interventions**

MAST

01

The first window open October 14th

02

Teachers in grades 3-5 have planning documents.

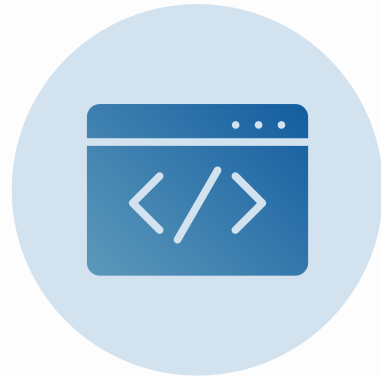
03

Teachers in 6-8 math developed their order of testlets.

04

We will be rostering, printing test tickets, and doing a final training in the next two weeks in preparation for game day on October 14th.

What to know about MAST



Fixed Form Test

MAST assesses a set of standards in a set time. It does not measure growth. Our district benchmarks allow us to measure growth and see if students are maintaining pace with the grade level standards.



Not all curriculum is covered

The last testing window closes May 2nd. We still have a month of content that will be on the test, but not covered in class.



Overtesting?

We strive for a balanced assessment system. However, in this first year we are not sure what MAST can replace. We will be gathering teacher input throughout the year to garner a better idea of how MAST can fit within our curriculum and assessment system.

MAST SAMPLE SCHEDULE

Third Grade Window 3: March 24 - May 2, 2025					Rationale	Rationale
24	25	26 *Fractions as Numbers Testlet *Compare and Find Equivalent Fractions	27 *Fractions as Numbers Testlet *Compare and Find Equivalent Fractions	28 *Fractions as Numbers Testlet *Compare and Find Equivalent Fractions	<p>Third grade students finish Eureka Module 5 near the end of April. Because spring break occurs the first week of May, it is suggested to take the two fraction testlets BEFORE spring break. <u>Teachers will need to consider their students/families and possible additional absences due to spring break.</u></p> <p><i>*It may be possible that the two fraction testlets could take the place of the Eureka Module 5 Assessment. TBD</i></p> <p>Since students will also take three Geometry/Measurement/Data testlets in this testing window, teachers will need to begin Eureka Module 6 before spring break and administer the testlets as late as possible in the testing window in order to get through as many lessons as possible. <i>Teachers can decide to do all testlets in one day, or split testlets between 2 or 3 days.</i></p>	<p>Module 7 begins around Feb 24th and Module 8 ends around April 18th. Both of these modules have both informational and literary texts and standards.</p>
31 No School	1 No School	2 No School	3 No School	4 No School		
7	8	9	10	11* Literary Testlet		
14	15	16	17	18* Informational Testlet		
21	22	23 * Time, Liquid, Volume, and Mass Testlet *Data and Graphing Testlet * Two-Dimensional Geometric Figures Testlet	24 * Time, Liquid, Volume, and Mass Testlet *Data and Graphing Testlet * Two-Dimensional Geometric Figures Testlet	25 * Time, Liquid, Volume, and Mass Testlet *Data and Graphing Testlet * Two-Dimensional Geometric Figures Testlet		
28 Make Up Testing	29 Make Up Testing	30 Make Up Testing	1 Make Up Testing	2 Vigilante Day		