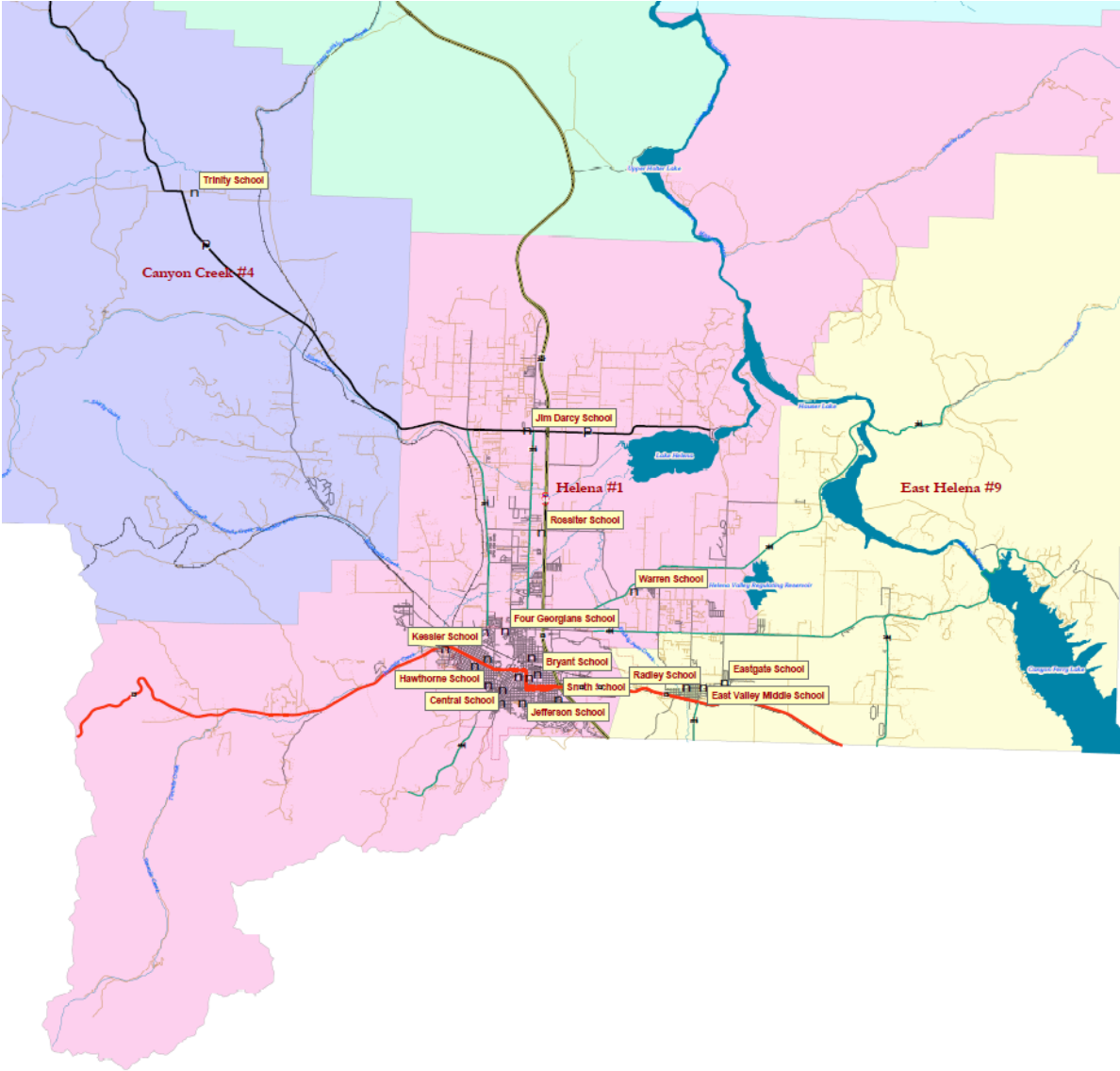


In-District Boundary Changes

Map of School Districts surrounding Helena (Helena Public Schools in pink)



## The Why? The How? The What? and The When?

Changing the East/West Boundary Line will balance Middle School and High School enrollments.

The reason to make the shift is to ensure equal student educational opportunities remain an option of each high school and middle school. If we do not change, students on one side of town will have more class opportunities than on the other side of town. Also, if we travel our program staff to different sites, we lose time with them, when they could be working with students. Our budget challenges and human resource constraints require us to maximize the use of our resources to ensure equal educational opportunities exist for all students in our schools.

The East/West Line needs to shift from East to West to balance the High School and Middle School enrollments to maintain equal opportunities in those schools.

Gradual Transition, this won't start right away. Begins for the 2026-2027 school year.

Students may choose to stay in the school they are currently in. This is a change in transportation routes. Another example is that the current 2024-2025 5<sup>th</sup> graders will attend the middle school they were planning to.

Sibling Rule: Families with children may follow their sibling in school attendance areas if they choose, parents will need to transport or utilize a courtesy route.

Transportation Changes will occur at the beginning of 2026-2027. Students will be able to use in-district courtesy transportation routes if families choose to stay at their current school. These are regional type stops. Courtesy routes are the concept where an in-district resident student may board an existing route.

The In-District Boundary Exception process has been in place for many years, it will continue.

The projection of school age children population in Lewis and Clark County in the next 20 years is relatively not changing according to the State Department of Commerce. (not growing, not declining).

Continued regular boundary maintenance is suggested for our district. (Every 7 to 10 years or more often)

## Trend for Lewis and Clark County: 5 year olds: through Year 2040

### Population Projection Regional Economic Models Incorporated (REMI)

2021  
data vintage year



COMMERCE

Trend

Age Pyramid

Change Map

Table

#### Population Projection - Trends

Adjust the figures below by selecting a custom age range, gender and race. Select one or more counties to display in the county figures.

Select State and Counties

Lewis and Clark

Select Age Range

5

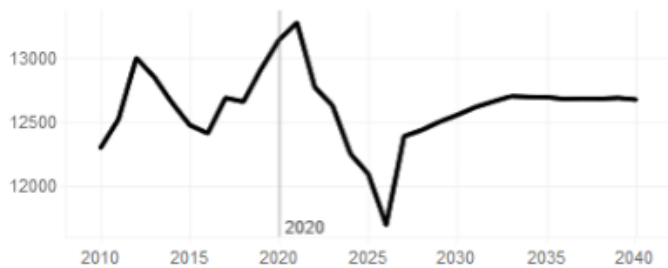
Select Genders

(All)

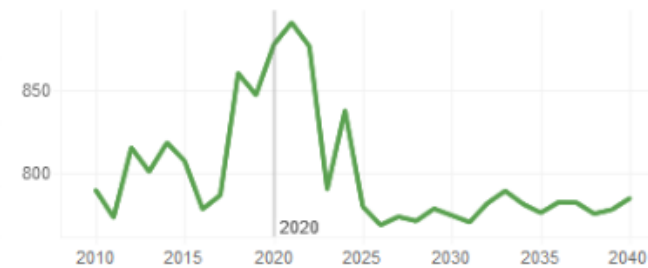
Select Races

(All)

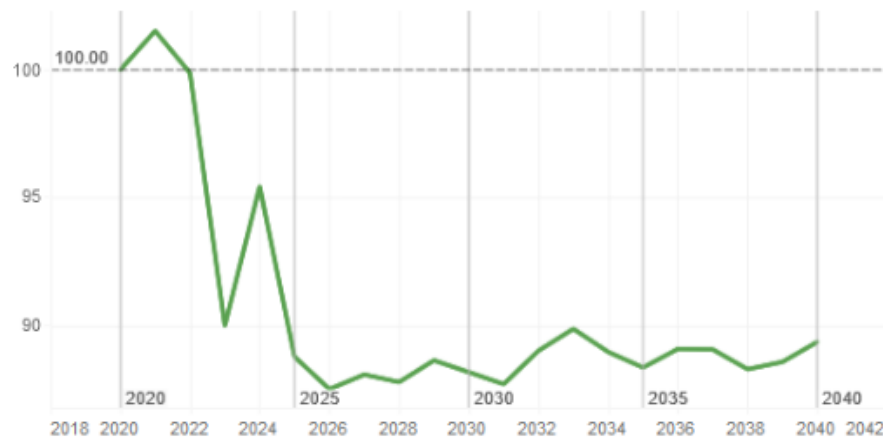
Projected Population Total for State of Montana



Projected Population Total for Selected Counties



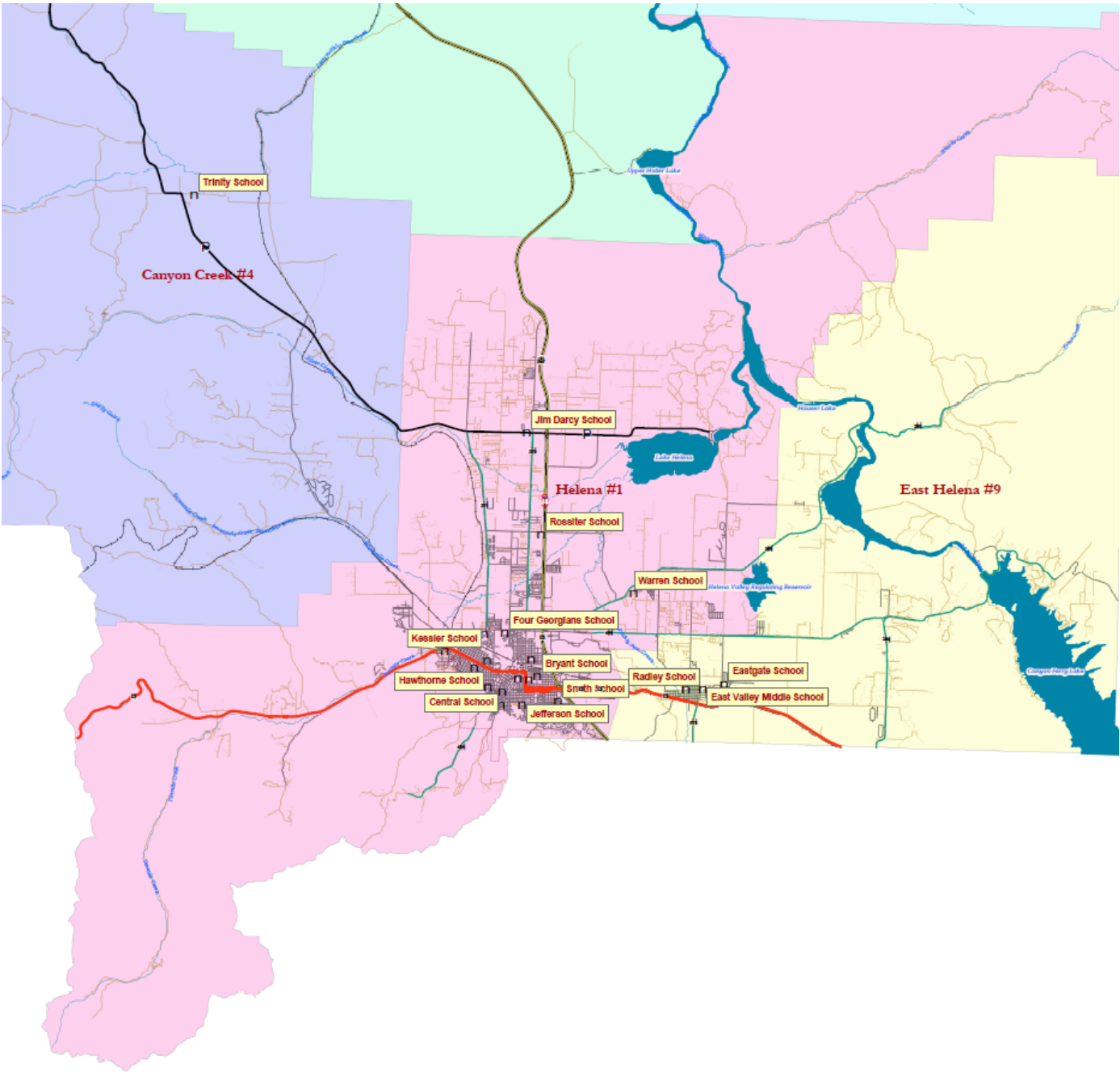
Change in Projected Population from 2020 (index)



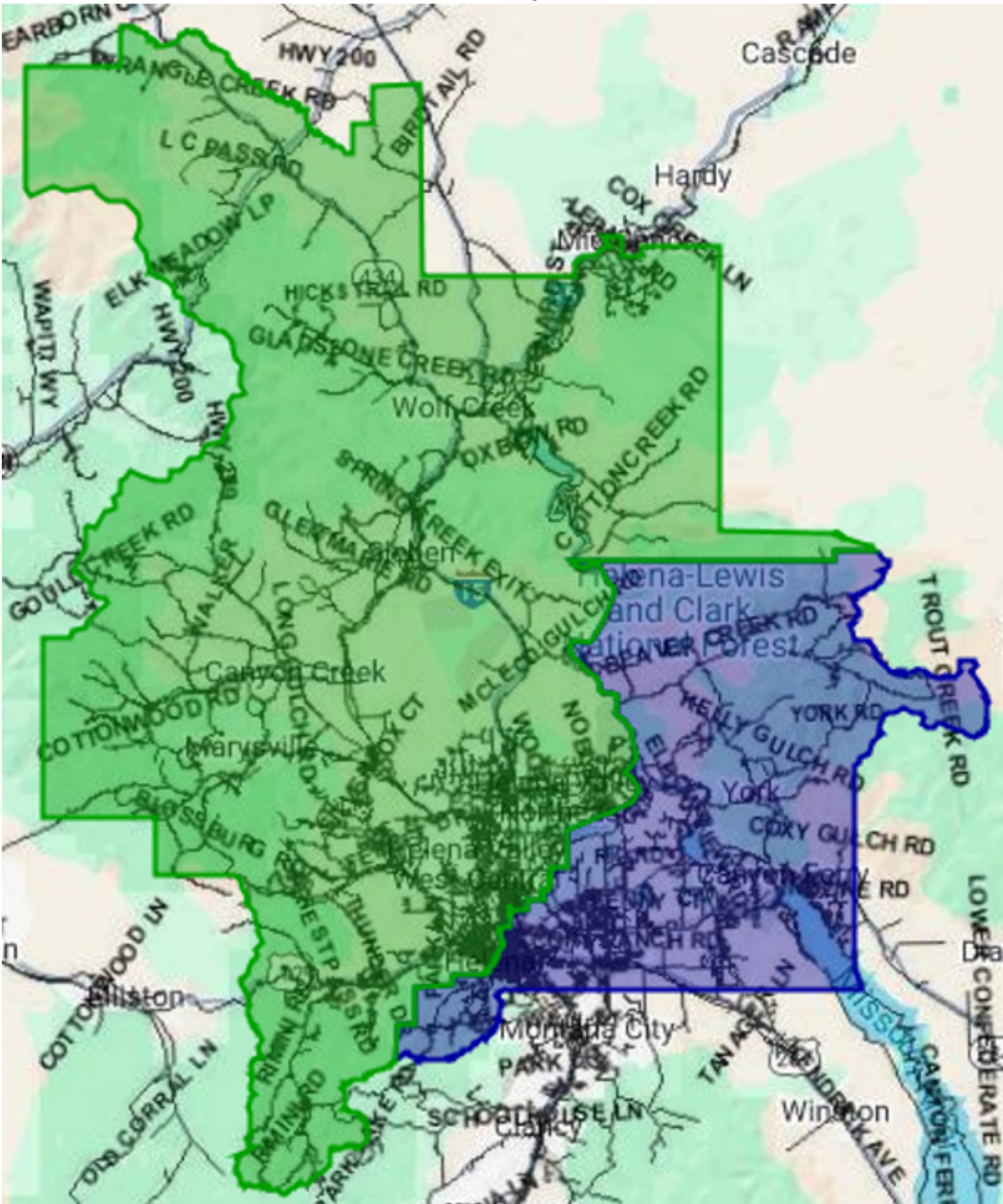
Projected population change is indexed to the data release year of 2020. Indexing the rate of change enables the comparison of data with different magnitudes.

Lewis and Clark

Map of School Districts surrounding Helena

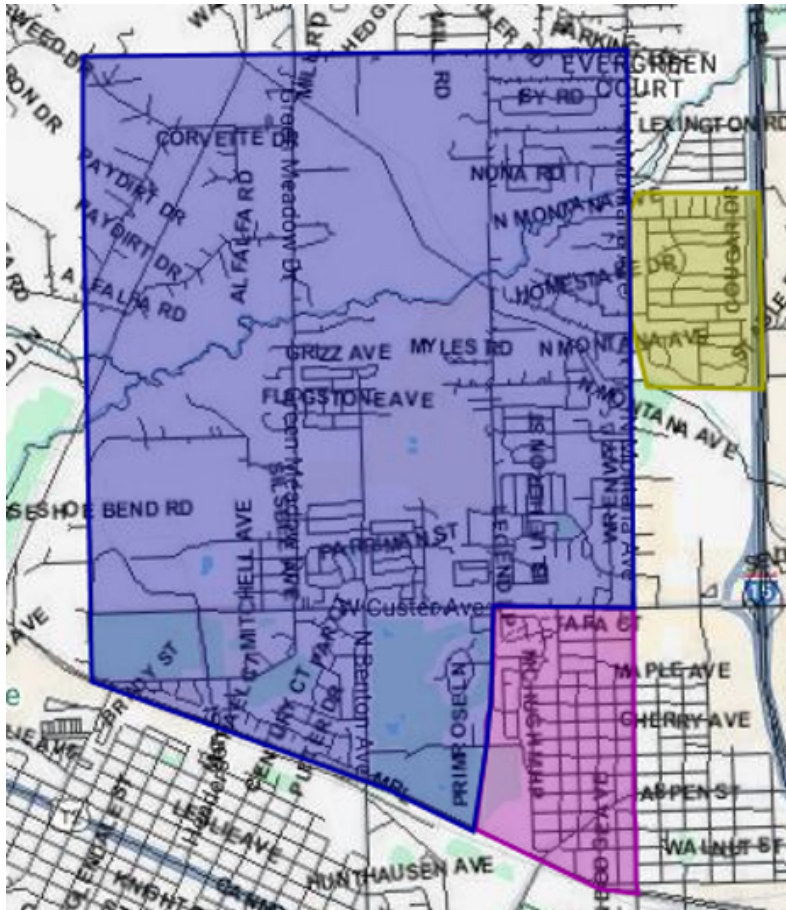


Current HMS/HHS and CRA/CHS Boundary

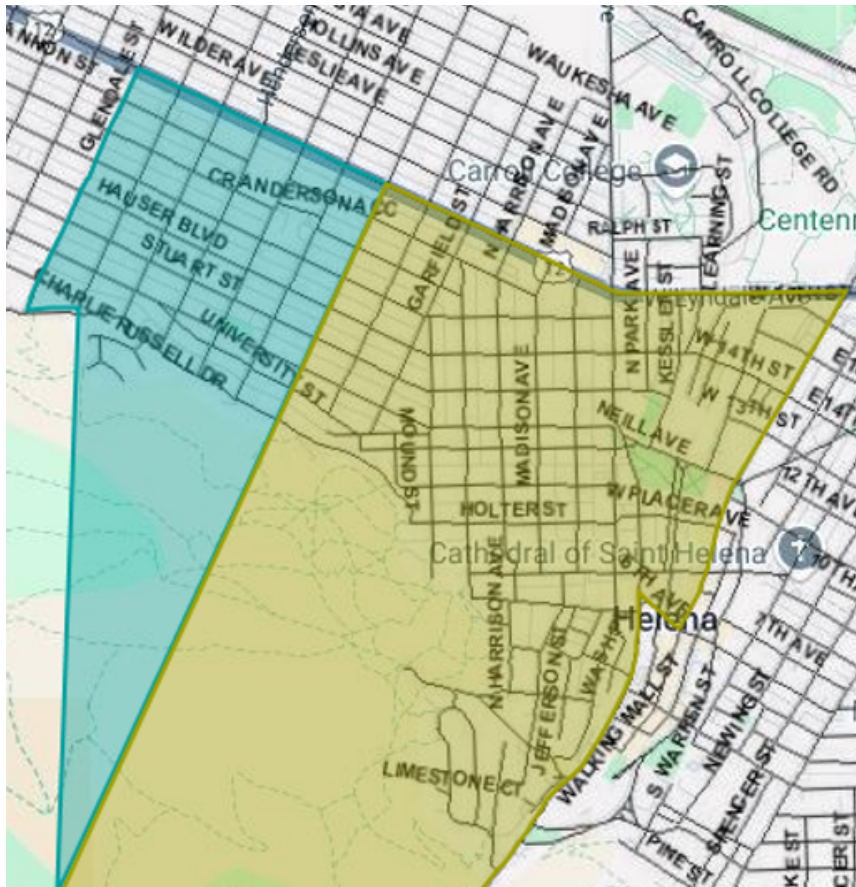




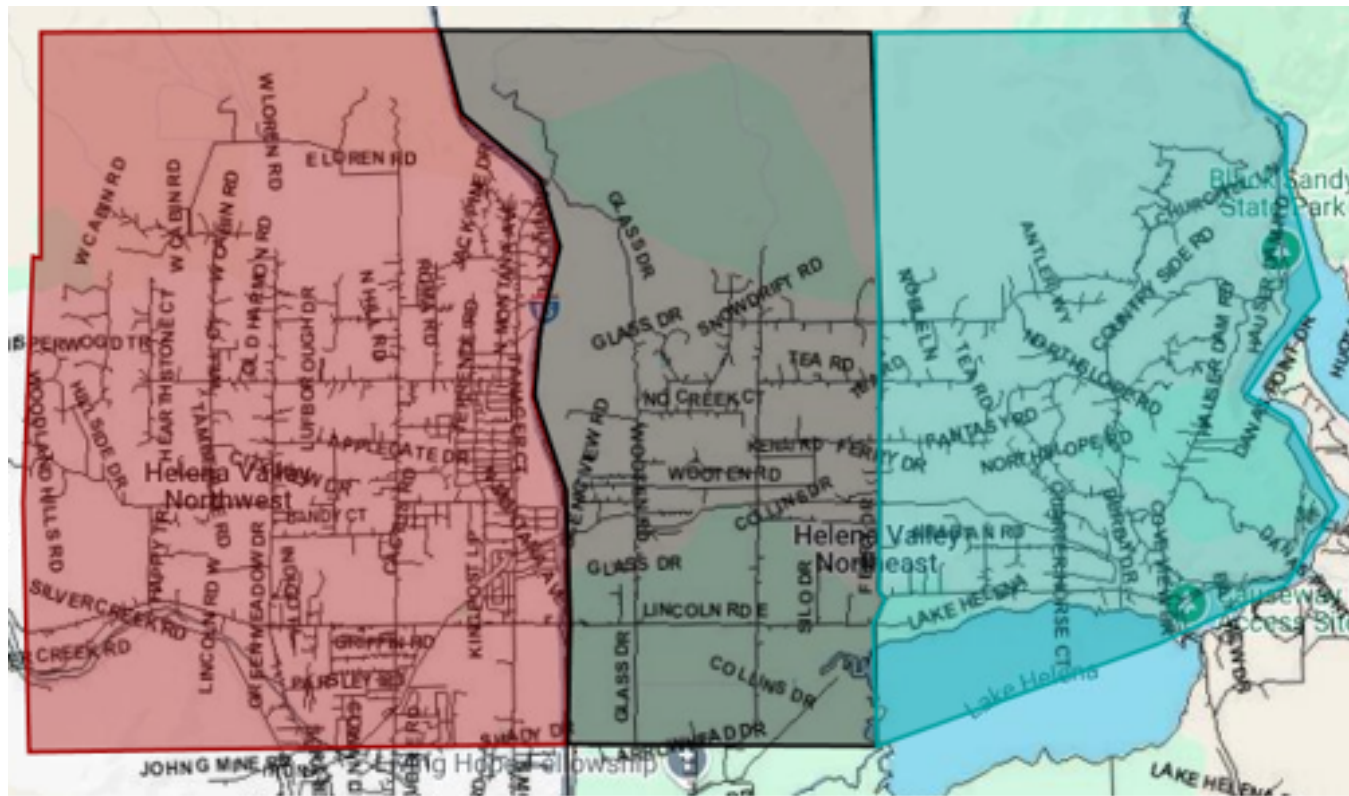
Boundary Adjustment	Area	Current	Change	Change Type	Further Description of Change	Why	How	When
1	Treasure State Addresses	Currently attends Four Georgians, CRA, CHS	Change Elementary School to Rossiter, maintain attendance to CRA, CHS	Change Elementary School, keep same MS and HS	Treasure State Acres Neighborhood changes k-5 student attendance changes from Four Georgians to Rossiter, these student will continue to attend the CRA/CHS pattern	Rossiter enrollment is declining and Four Georgians is growing	Currently 70 students live in this area, effectively adds 12 students per grade to Rossiter, frees up the Four Georgians neighborhood near the school to take its enrollment rather than to overflow them to Broadwater	Begins with enrolling Kindergarteners for 2026-2027
2	Tree Street Addresses	Currently attends Four Georgians, then either CRA or HMS, either CHS or HHS	Change to HMS and HHS, maintain Four Georgians	Has been an optional split to MS and HS, Change is to require the ES to split into HMS and CRA with HHS and CHS	After grade 5 at Four Georgians, Tree Street Neighborhood, will attend HMS and HHS. The dividing line will be McHugh Lane. West to CRA, East to HMS.	Assists in reducing enrollment at CRA and CHS, growing the enrollment at HMS and HHS	Currently 30 Middle School students will attend HMS and 40 High School students live in this neighborhood and will attend HHS.	Begins with Transition to 6th Grade for HMS for 2026-2027



Boundary Adjustment	Area	Current	Change	Change Type	Further Description of Change	Why	How	When
3	North and East Mount Helena Addresses, South of Euclid	Currently attends Hawthorne, CRA, CHS	Using Grant Street as the East/West Line. The East side would change to attend HMS/HHS. The West side would change to attend CRA/CHS. If Hawthorne closed, this line would be used to split students to Kessler and Central.	Change is to require the ES to split into HMS and CRA with HHS and CHS	After grade 5, students will split their 6-8 attendance and 9-12 attendance area. The dividing line will be Grant Street. West to CRA/CHS, East to HMS/HHS.	Assists in reducing enrollment at CRA and CHS, growing the enrollment at HMS and HHS	Using Grant Street as a line, the West side will go to CRA/CHS and the East side will go to HMS/HHS. 48 students would change to attend HMS. 64 students would change to attend HHS.	Begins with Transition to 6th Grade for HMS for 2026-2027, if closed Kessler and Central will be utilized earlier

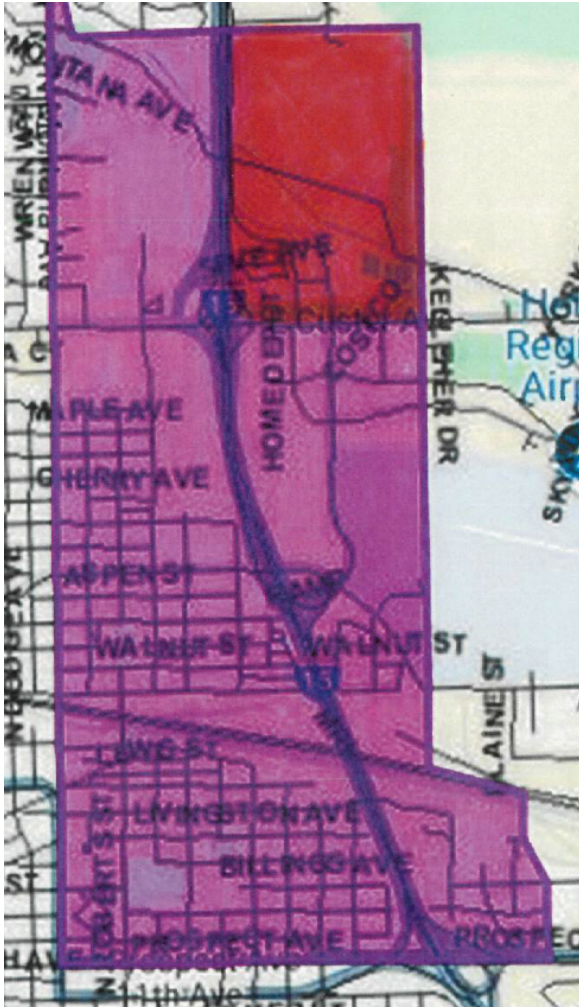


Boundary Adjustment	Area	Current	Change	Change Type	Further Description of Change	Why	How	When
4	North of Lincoln Road and East of Ferry Street	Currently attends, Jim Darcy, CRA, CHS	Change to Warren, HMS, HHS	Change Elementary School, Change MS and HS	k-5 students instead of attending Jim Darcy, these students will attend Warren, HMS then HHS	Assists in reducing the enrollment at Jim Darcy, CRA and CHS. Increases the enrollment at Warren, HMS, HHS.	Using Ferry Street North of Lincoln Road as a line. The West side will continue to attend Jim Darcy, CRA, CHS. The East side will attend Warren (48 students) , HMS (12 students), HHS (32 students)	Begins with K enrollment for 2026-2027 for Warren, Begins with Transition to 6th Grade for HMS for 2026-2027





Boundary Adjustment	Area	Current	Change	Change Type	Further Description of Change	Why	How	When
5	North of Custer Ave, East of I-15 (South of Pleasant Valley Subdivision, this is the new housing North of Super 1 Foods)	Currently Bryant attendance Area, then HMS, HHS	Change to Rossiter, maintain HMS, HHS	Change to attend new Elementary, keep the original MS and HS which means its now a split	Change K-5 to attend Rossiter instead of Bryant, this was formerly a Bryant/HMS/HHS attendance area. These students will attend Rossiter, then attend HMS/HHS. After grade 5, these students will spilt from Rossiter and attend HMS/HHS.	Makes sense with location of this subdivision	3 students currently live in this neighborhood.	Begins with K enrollment for 2026-2027



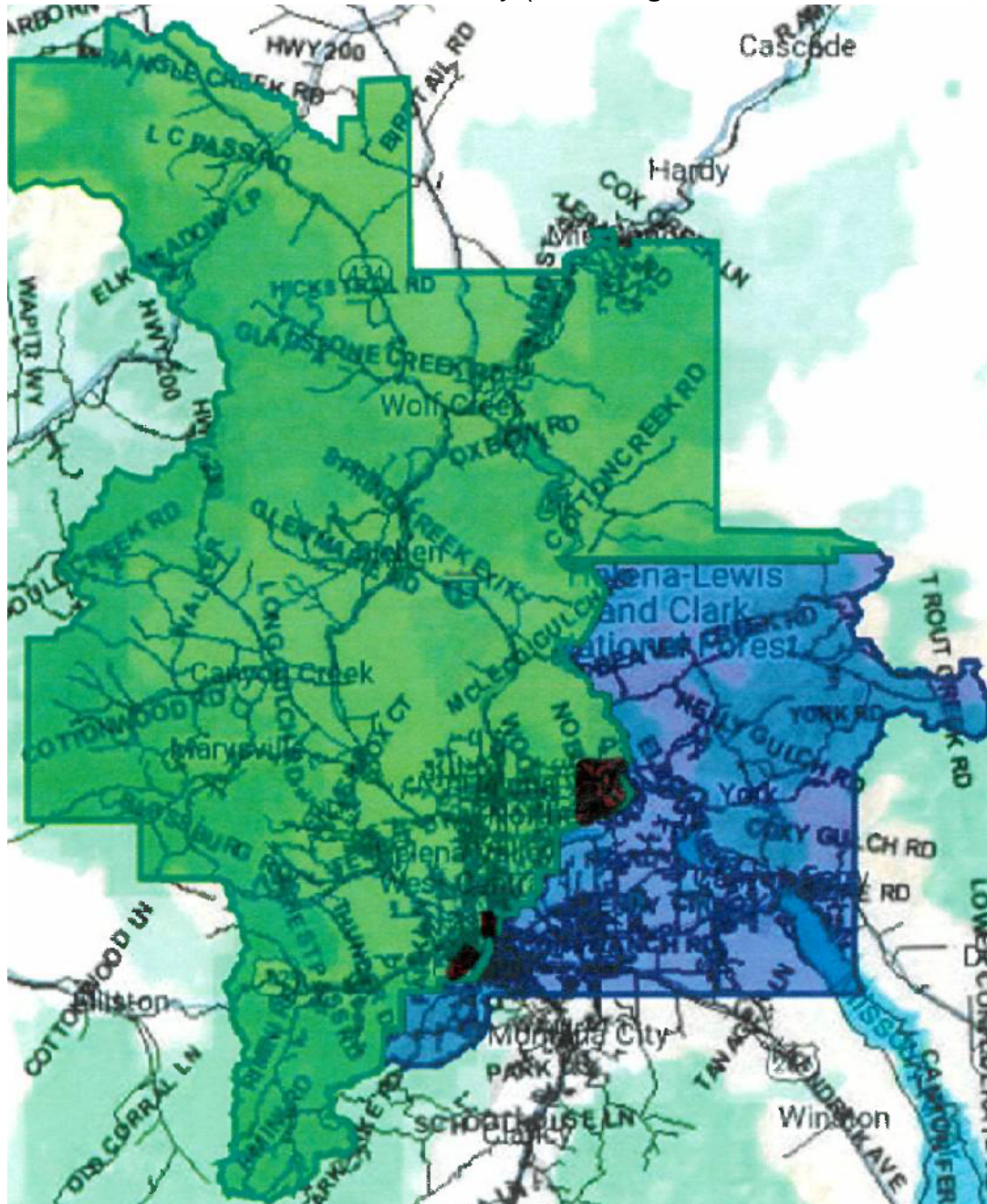
Fall Enrollment Building Totals 10/7/2024	Adjustments occurring over time with these Boundary Adjustments	New Totals with these Boundary Adjustments over time
---	---	--

Broadwater	267	0	267
Bryant	282	-3	279
Central	316	0	316
Four Georgians	469	-70	399
Hawthorne	181	0	181
Jefferson	243	0	243
Jim Darcy	468	-48	420
Kessler	235	0	235
Rossiter	367	73	440
Smith	276	0	276
Warren	274	48	322

C.R. Anderson	968	-90	878
Helena Middle	705	90	795

Capital	1307	-136	1171
Helena High	986	136	1122

NEW HMS/HHS and CRA/CHS Boundary (Red now goes with Blue to the East, Green Stays West)



The Why? The How? The What? and The When?

Changing the East/West Boundary Line will balance Middle School and High School enrollments.

The reason to make the shift is to ensure equal student educational opportunities remain an option of each high school and middle school. If we do not change, students on one side of town will have more class opportunities than on the other side of town. Also, if we travel our program staff to different sites, we lose time with them, when they could be working with students. Our budget challenges and human resource constraints require us to maximize the use of our resources to ensure equal educational opportunities exist for all students in our schools.

The East/West Line needs to shift from East to West to balance the High School and Middle School enrollments to maintain equal opportunities in those schools.

Gradual Transition, this won't start right away. Begins for the 2026-2027 school year.

Students may choose to stay in the school they are currently in. This is a change in transportation routes. Another example is that the current 2024-2025 5<sup>th</sup> graders will attend the middle school they were planning to.

Sibling Rule: Families with children may follow their sibling in school attendance areas if they choose, parents will need to transport or utilize a courtesy route.

Transportation Changes will occur at the beginning of 2026-2027. Students will be able to use in-district courtesy transportation routes if families choose to stay at their current school. These are regional type stops. Courtesy routes are the concept where an in-district resident student may board an existing route.

The In-District Boundary Exception process has been in place for many years, it will continue.

The projection of school age children population in Lewis and Clark County in the next 20 years is relatively not changing according to the State Department of Commerce. (not growing, not declining).

Continued regular boundary maintenance is suggested for our district. (Every 7 to 10 years or more often)