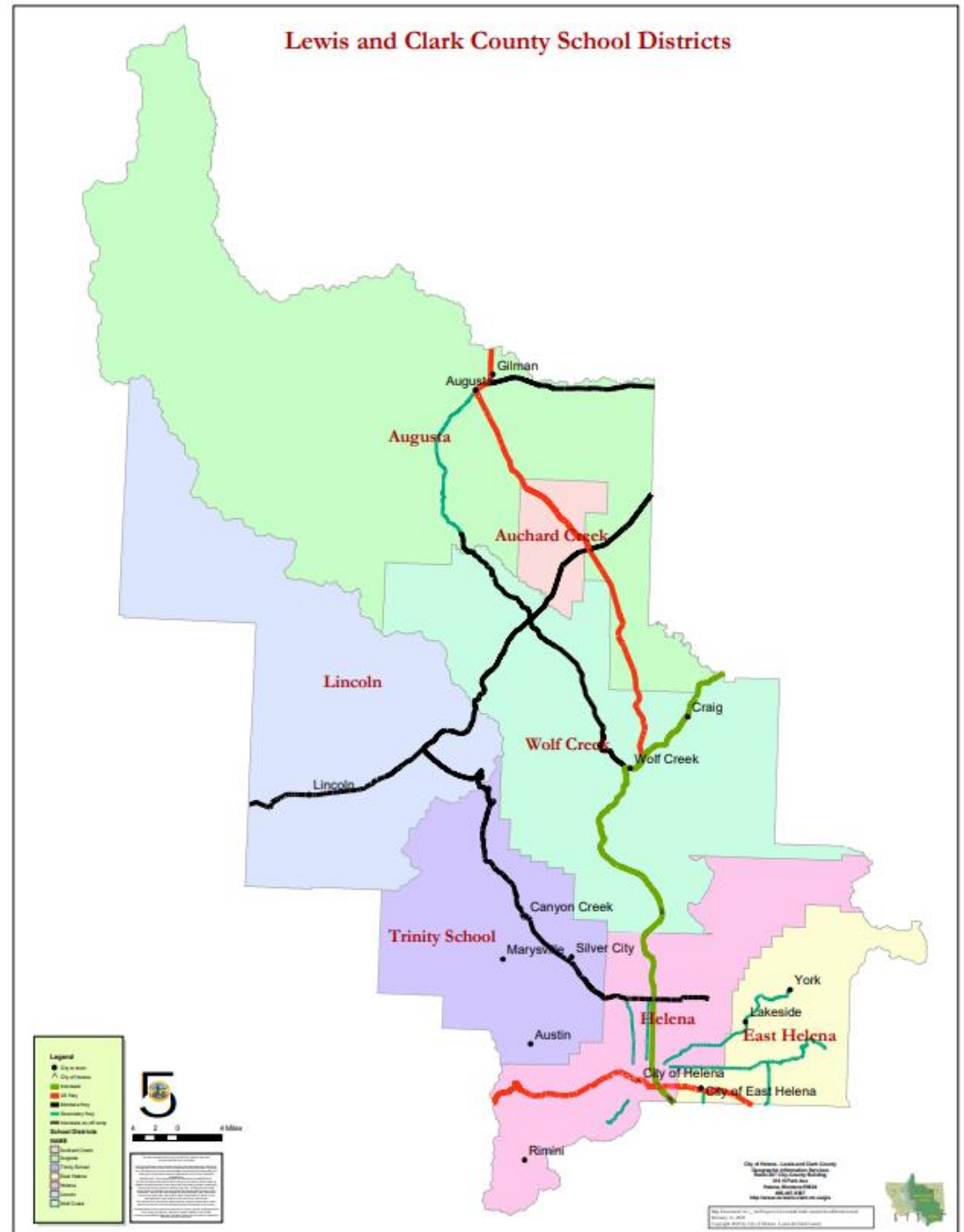


**10/14/2025**

## Map of School Districts surrounding Helena

(Helena Public Schools District in pink)



## The Why? The How? The What? and The When?

Changing the East/West Boundary Line will balance Middle School and High School enrollments.

The reason to make the shift is to ensure equal student educational opportunities remain an option of each high school and middle school. If we do not change, students on one side of town will have more class opportunities than on the other side of town. Also, if we travel our program staff to different sites, we lose time with them, when they could be working with students. Our budget challenges and human resource constraints require us to maximize the use of our resources to ensure equal educational opportunities exist for all students in our schools.

The East/West Line needs to shift from East to West to balance the High School and Middle School enrollments to maintain equal opportunities in those schools.

Gradual Transition: Begins for the 2026-2027 school year.

Students may choose to stay in the school they are currently in. This is a change in transportation routes.

Sibling Rule: Families with children may follow their sibling in school attendance areas if they choose, parents will need to transport or utilize a courtesy route.

Transportation Changes will occur at the beginning of 2026-2027. Students will be able to use in-district courtesy transportation routes if families choose to stay at their current school. These are regional type stops. Courtesy routes are the concept where an in-district resident student may board an existing route.

The In-District Boundary Exception process has been in place for many years. It will continue.

The projection of school age children population in Lewis and Clark County in the next 20 years is relatively not changing, according to the State Department of Commerce. (not growing, not declining).

Continued regular boundary maintenance is suggested for our district. (Every 10 years or more often)

## Trend for Lewis and Clark County: 5 year olds: through Year 2040

### Population Projection Regional Economic Models Incorporated (REMI)

2021  
data vintage year



Trend

Age Pyramid

Change Map

Table

#### Population Projection - Trends

Adjust the figures below by selecting a custom age range, gender and race. Select one or more counties to display in the county figures.

Select State and Counties:

Lewis and Clark

Select Age Range

5 5

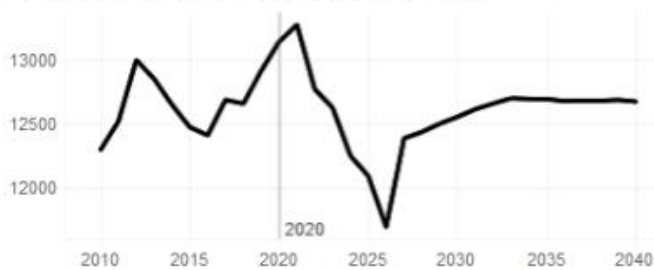
Select Genders

(All)

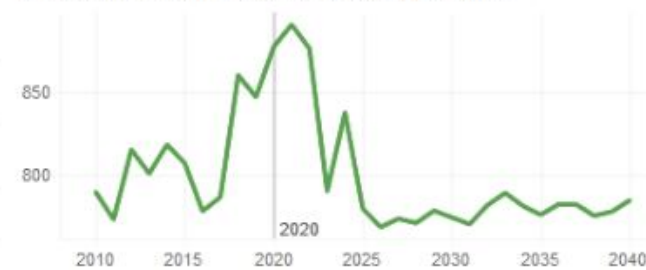
Select Races

(All)

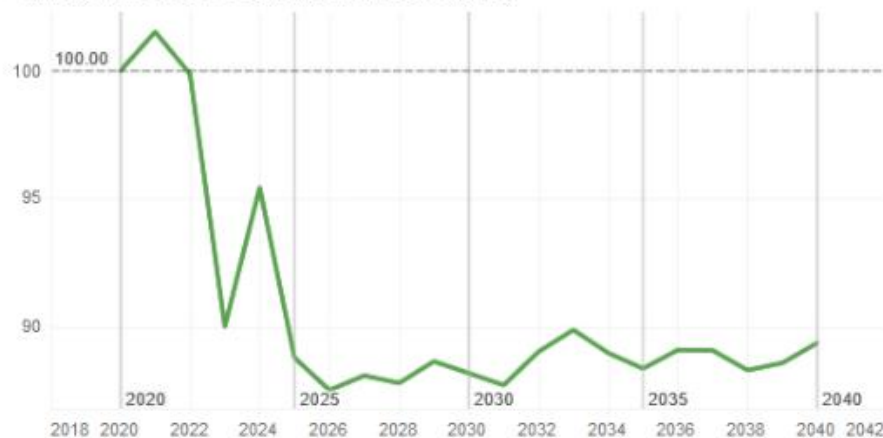
Projected Population Total for State of Montana



Projected Population Total for Selected Counties



Change in Projected Population from 2020 (index)

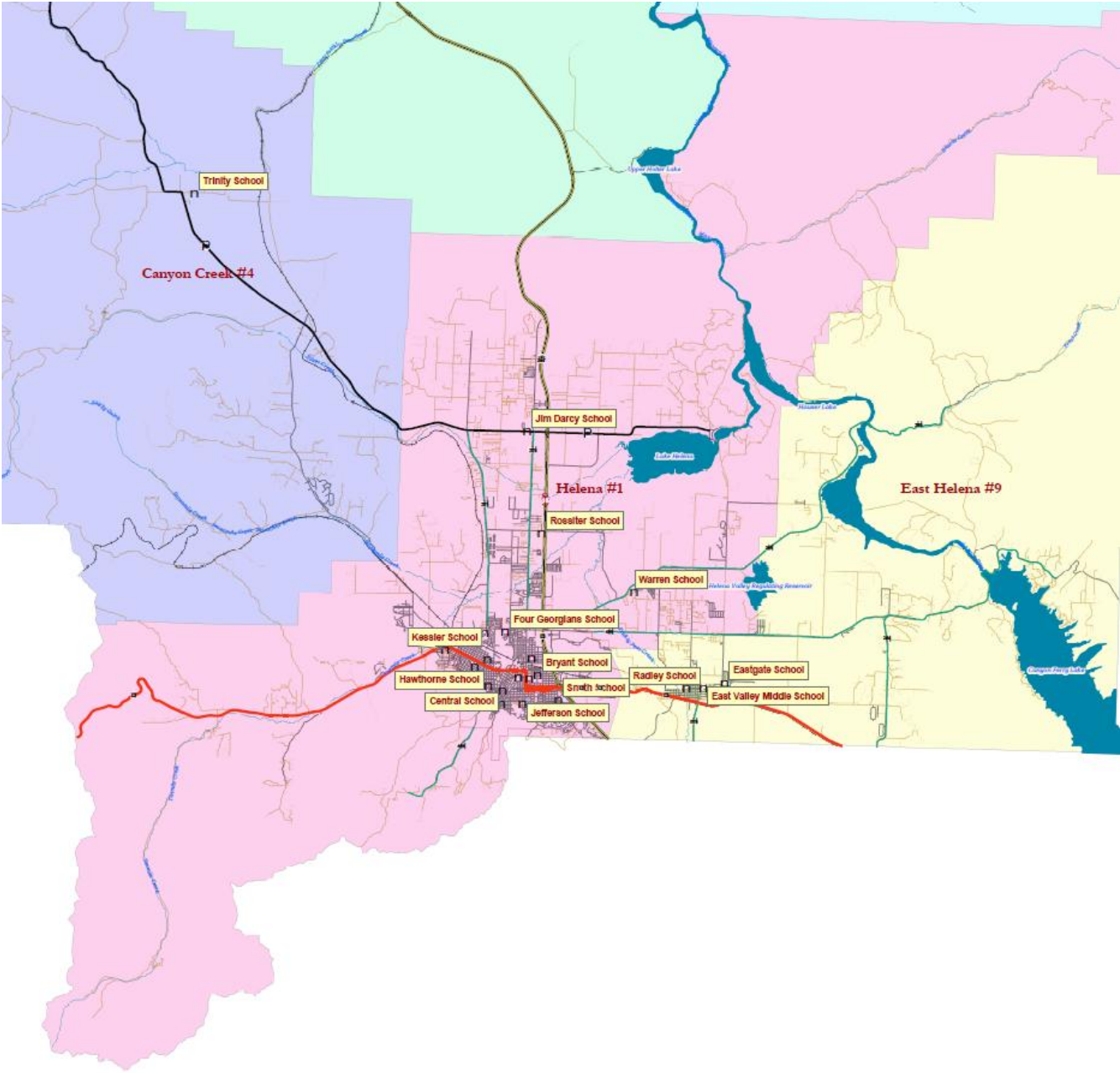


Projected population change is indexed to the data release year of 2020. Indexing the rate of change enables the comparison of data with different magnitudes.

Lewis and Clark

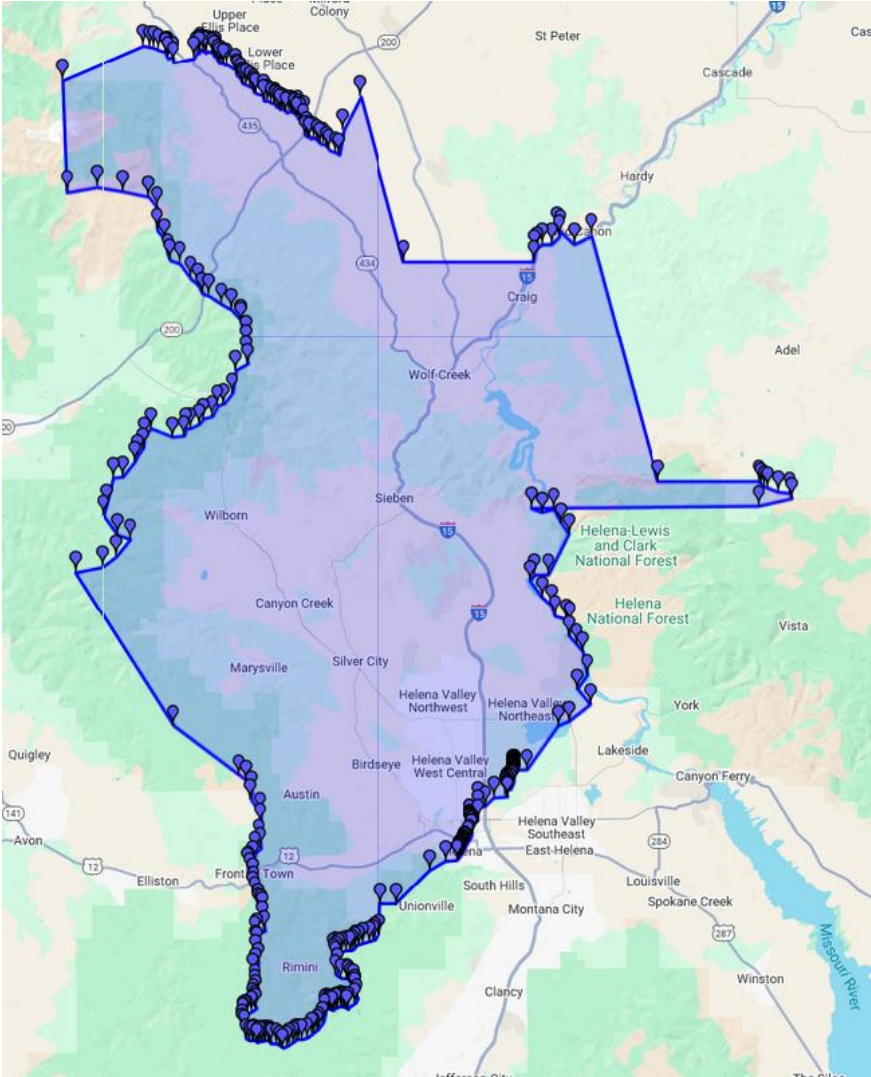
Data Source: eRemi Montana State and County Population Projection by Gender, Race and Age from Regional Economic Models Incorporated (REMI) compiled by Montana Department of Commerce.

Map of School Districts surrounding Helena  
(2024-2025 School Year)

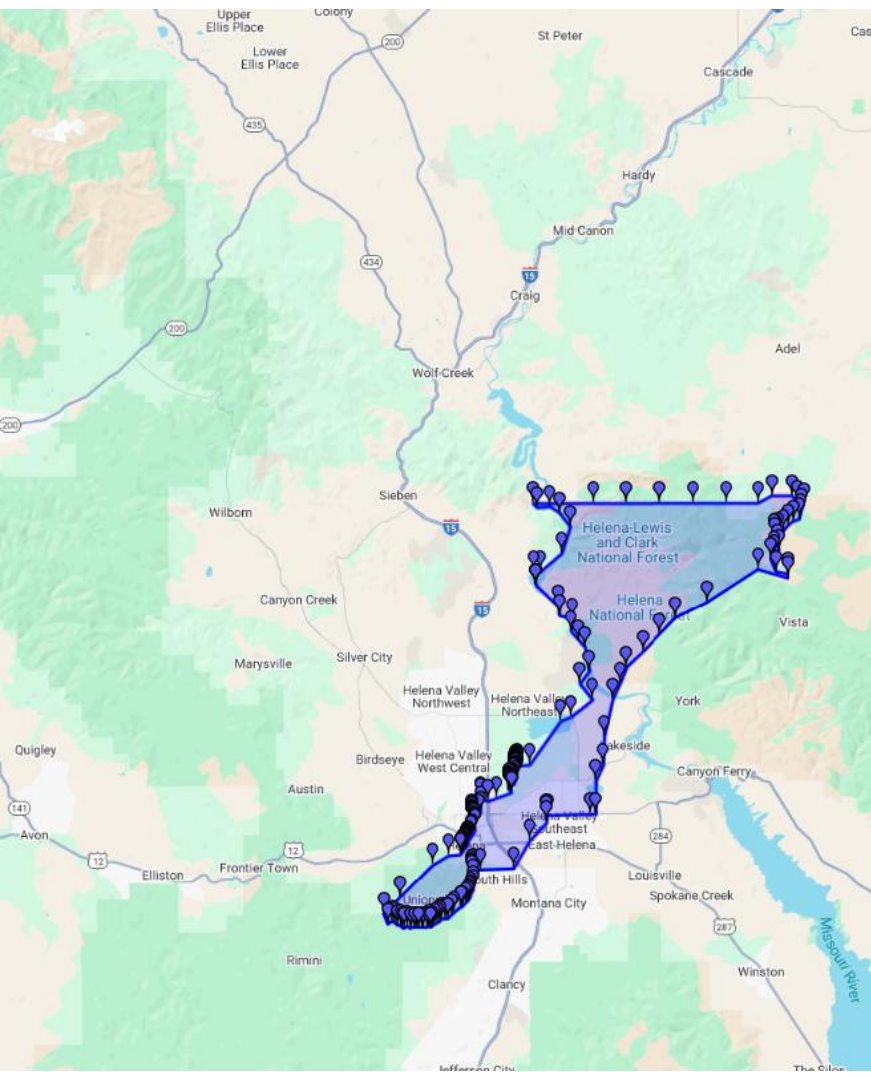




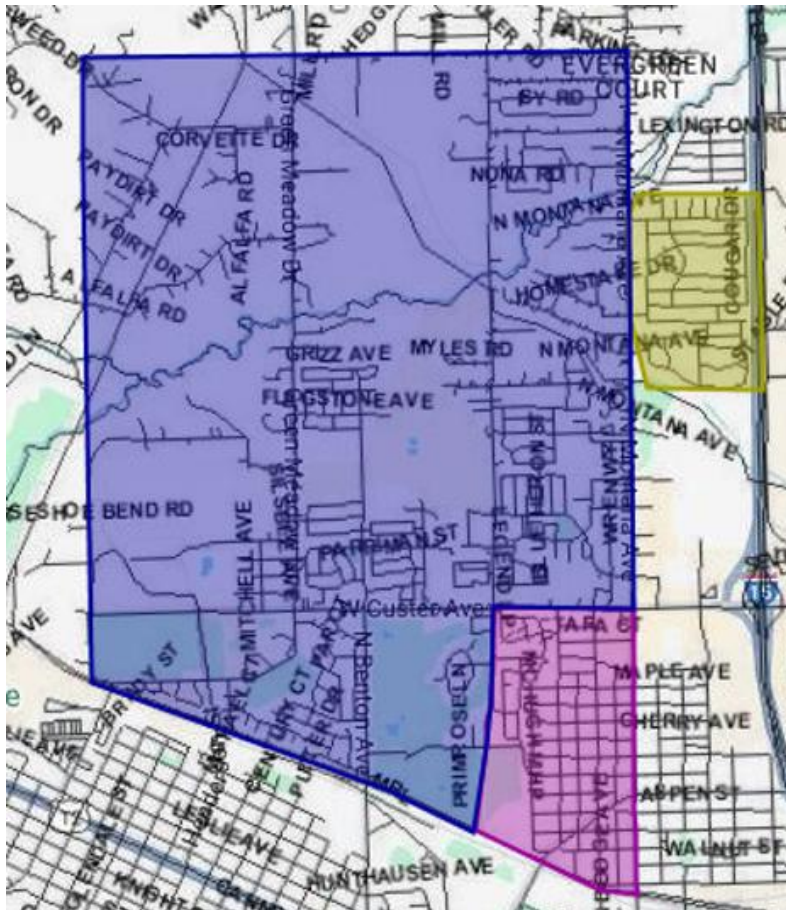
Current CHS Boundary (Larger Image and Region)



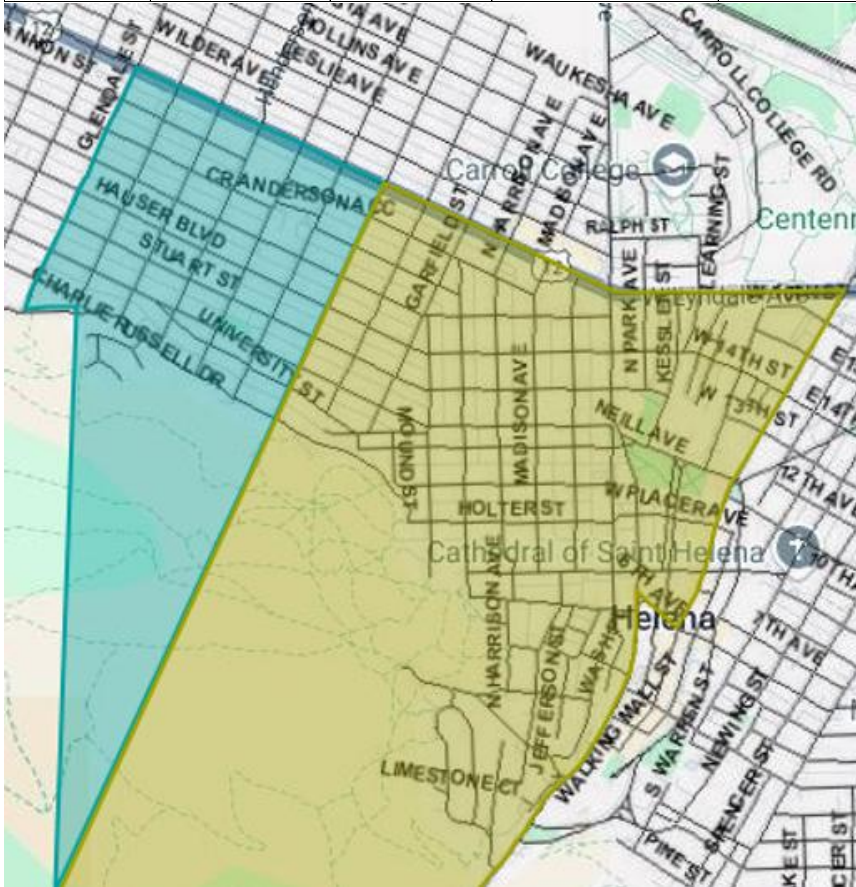
Current HHS Boundary (Smaller Image and Region)



Boundary Adjustment	Area	Current	Change	Change Type	Further Description of Change	Why	How	When
1	Treasure State Addresses	Currently attends Four Georgians, CRA, CHS	Change Elementary School to Rossiter, maintain attendance to CRA, CHS	Change Elementary School, keep same MS and HS	Treasure State Acres Neighborhood changes k-5 student attendance changes from Four Georgians to Rossiter, these students will continue to attend the CRA/CHS pattern	Rossiter enrollment is declining and Four Georgians is growing	70 students live in this area, effectively adds 12 students per grade to Rossiter, Four Georgians overflow less students to other schools	Begins with enrolling Kindergarteners for 2026-2027
2	Tree Street Addresses	Currently attends Four Georgians, then either CRA or HMS, either CHS or HHS	Change to HMS and HHS, maintain Four Georgians	Has been an optional split to MS and HS, Change is to require the Elementary School to split into HMS and CRA with HHS and CHS	After grade 5 at Four Georgians, Tree Street Neighborhood students attend HMS and HHS. The dividing line is McHugh Lane. West to CRA, East to HMS.	Assists in reducing enrollment at CRA and CHS, growing the enrollment at HMS and HHS	30 Middle School students go to HMS and 40 High School students go to HHS.	Begins with Transition to 6th Grade for HMS for 2026-2027

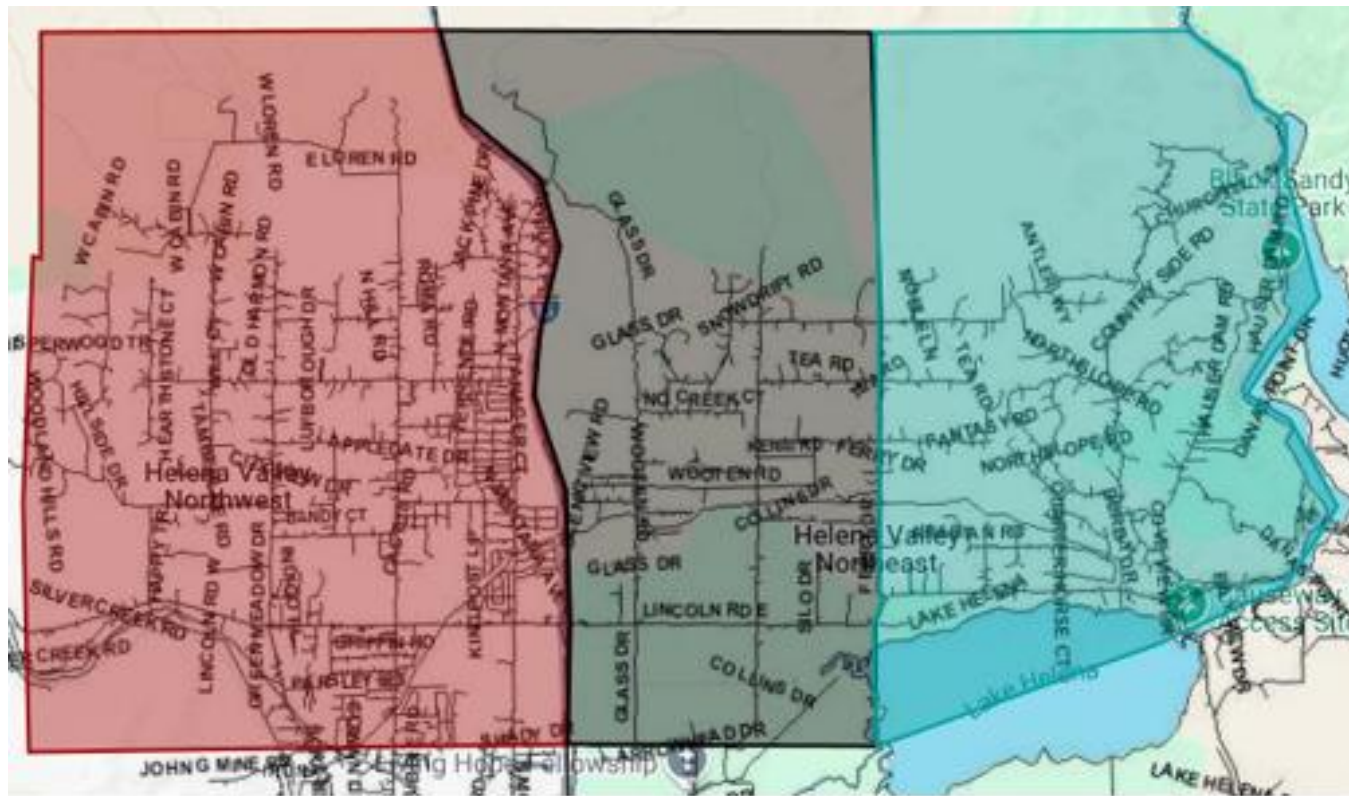


Boundary Adjustment	Area	Current	Change	Change Type	Further Description of Change	Why	How	When
3	North and East Mount Helena Addresses, South of Euclid	Currently attends Kessler, Central, CRA, HMS, CHS, HHS	Using Grant Street as the East/West Line. The East side attends HMS/HHS. The West side attends CRA/CHS.	East side goes to HMS/HHS and West side goes CRA/CHS	The dividing line is Grant Street. West to CRA/CHS, East to HMS/HHS.	Assists in reducing enrollment at CRA and CHS, growing the enrollment at HMS and HHS	Using Grant Street as a line, the West side goes to CRA/CHS and the East side goes to HMS/HHS. 48 students attends HMS. 64 students attend HHS.	Begins with Transition to 6th Grade for HMS for 2026-2027



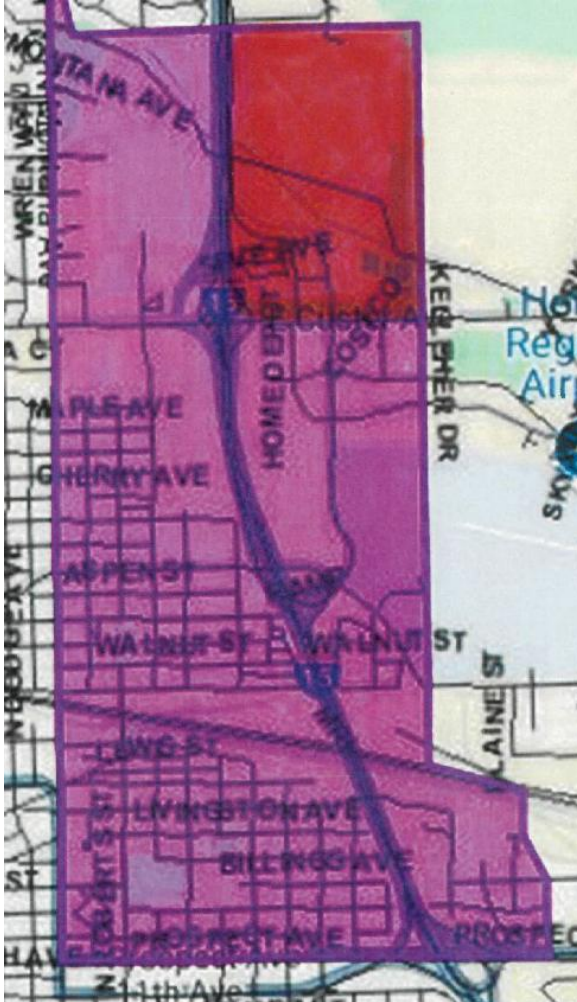


Boundary Adjustment	Area	Current	Change	Change Type	Further Description of Change	Why	How	When
4	North of Lincoln Road and East of Ferry Drive	Currently attends, Jim Darcy, CRA, CHS	Change to Warren, HMS, HHS	Change Elementary School, Change MS and HS	k-5 students instead of attending Jim Darcy, these students attend Warren, HMS then HHS	Assists in reducing the enrollment at Jim Darcy, CRA and CHS. Increases the enrollment at Warren, HMS, HHS.	Using Ferry Drive North of Lincoln Road as a line. The West side attends Jim Darcy, CRA, CHS. The East side attends Warren (48 students), HMS (12 students), HHS (32 students)	Begins with K enrollment for 2026-2027 for Warren, Begins with Transition to 6th Grade for HMS for 2026-2027





Boundary Adjustment	Area	Current	Change	Change Type	Further Description of Change	Why	How	When
5	North of Custer Ave, East of I-15 (South of Pleasant Valley Subdivision, this is the new housing North of Super 1 Foods)	Currently Bryant attendance Area, then HMS, HHS	Change to Rossiter, maintain HMS, HHS	Change to attend new Elementary, keep the original MS and HS which means its now a split	Change K-5 to attend Rossiter instead of Bryant, this was formerly a Bryant/HMS/HHS attendance area. These students attend Rossiter, then attend HMS/HHS. After grade 5, these students spilt from Rossiter and attend HMS/HHS.	Makes sense with location of this subdivision	3 students currently live in this neighborhood.	Begins with K enrollment for 2026-2027



Fall Enrollment Site Totals 10/6/2025	Adjustments occurring over time with these Boundary Adjustments	Estimated New Totals with these Boundary Adjustments over time
--	---	--

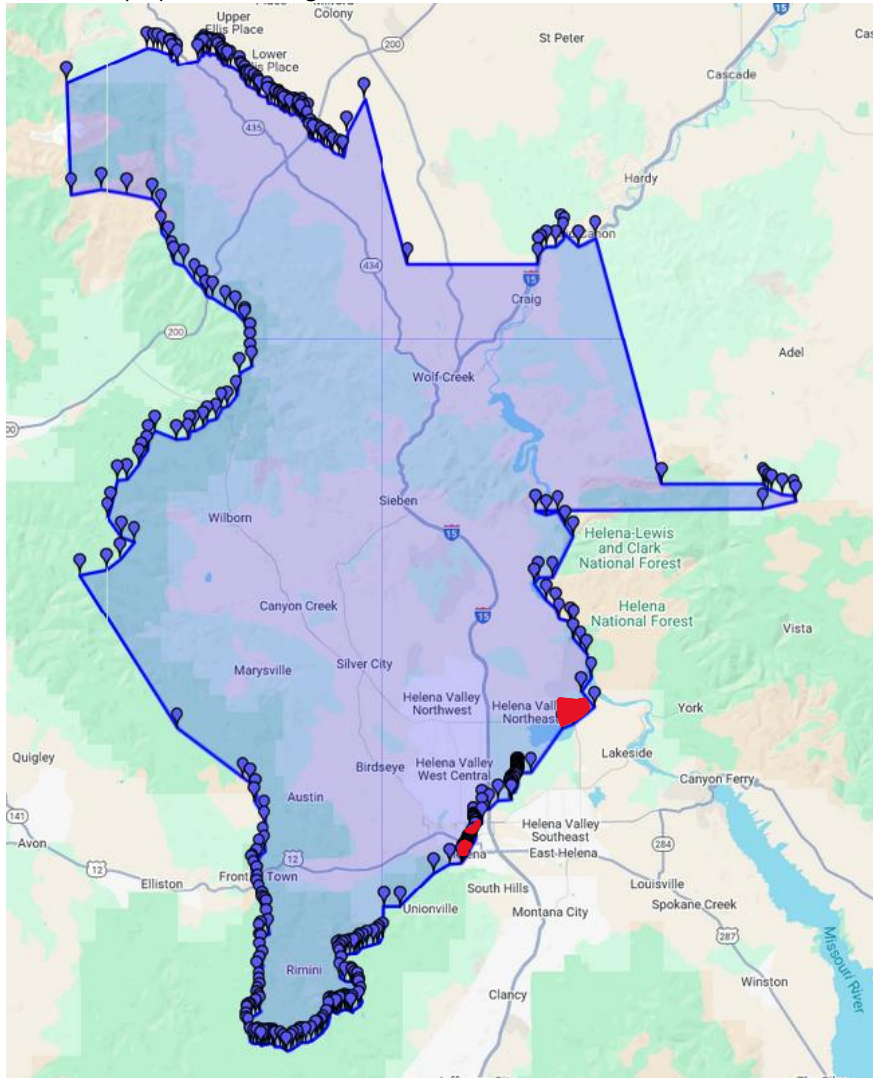
Broadwater	248	0	248
Bryant	253	-3	250
Central	406	0	406
Four Georgians	477	-70	407
Jefferson	252	0	252
Jim Darcy	458	-48	410
Kessler	282	0	282
Rossiter	358	73	431
Smith	299	0	299
Warren	262	48	310

C.R. Anderson	927	-90	837
Helena Middle	723	90	813

Capital	1369	-136	1233
Helena High	982	136	1118

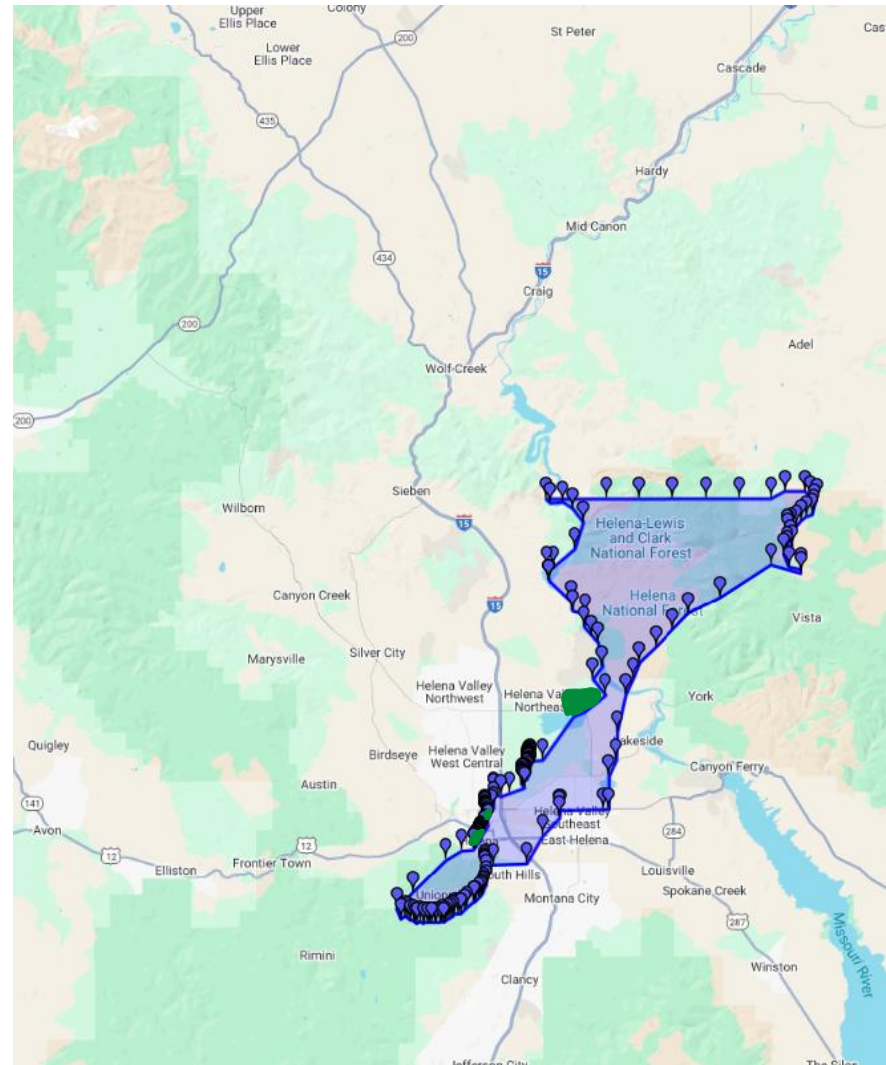
## Proposed change to CHS (CRA) Boundary

Red area is proposed to change from West to East

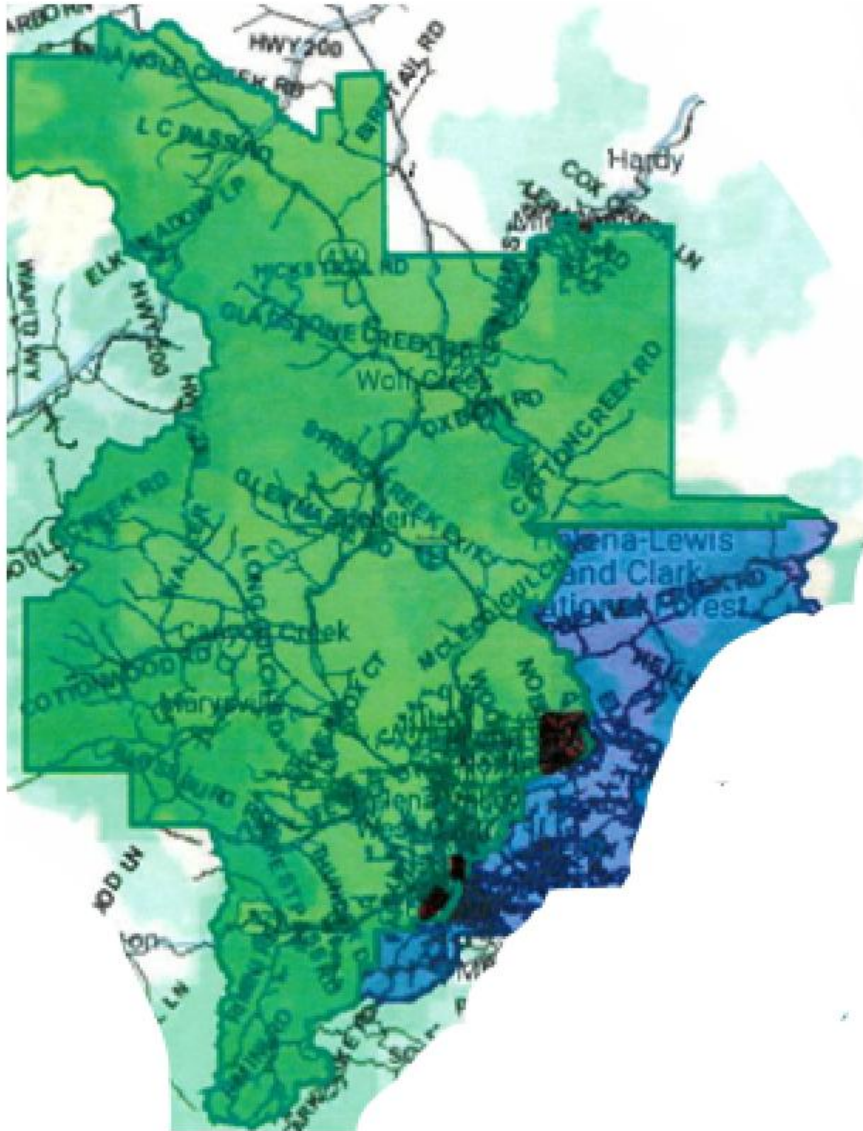


## Proposed Change to HHS (HMS) Boundary

Green area is proposed to change from West to East



MAP of the CHS and HHS boundaries combined, the red portion is the new proposed area to move from West to East





The Why? The How? The What? and The When?

Changing the East/West Boundary Line will balance Middle School and High School enrollments.

The reason to make the shift is to ensure equal student educational opportunities remain an option of each high school and middle school. If we do not change, students on one side of town will have more class opportunities than on the other side of town. Also, if we travel our program staff to different sites, we lose time with them, when they could be working with students. Our budget challenges and human resource constraints require us to maximize the use of our resources to ensure equal educational opportunities exist for all students in our schools.

The East/West Line needs to shift from East to West to balance the High School and Middle School enrollments to maintain equal opportunities in those schools.

Gradual Transition: Begins for the 2026-2027 school year.

Students may choose to stay in the school they are currently in. This is a change in transportation routes.

Sibling Rule: Families with children may follow their sibling in school attendance areas if they choose, parents will need to transport or utilize a courtesy route.

Transportation Changes will occur at the beginning of 2026-2027. Students will be able to use in-district courtesy transportation routes if families choose to stay at their current school. These are regional type stops. Courtesy routes are the concept where an in-district resident student may board an existing route.

The In-District Boundary Exception process has been in place for many years. It will continue.

The projection of school age children population in Lewis and Clark County in the next 20 years is relatively not changing, according to the State Department of Commerce. (not growing, not declining).

Continued regular boundary maintenance is suggested for our district. (Every 10 years or more often)